



2026 H1 January to June





RELIABILITY WHEN IT COUNTS

Ektor is a star of the Emergency Lighting Industry. Founded in 2004, it was the first to use LED exits, introduced the first DALI range in 2006, achieved the first DALI-2 certified emergency exit, and the first to build wireless connectivity on IEC 62386-104.

With so many 'firsts' it's no surprise Ektor is at the forefront of compliance, design and testing.

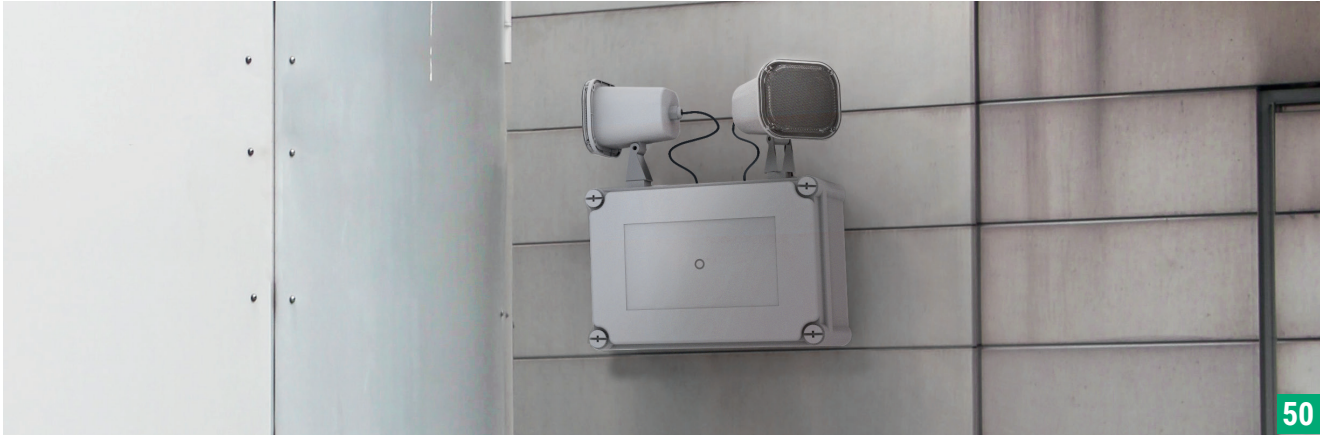
Designed in Australia for international conditions, Ektor maintains complete production control throughout the entire manufacturing process.

zencontrol

zencontrol is the parent company of Ektor and aims to deliver a wide range of reliable products at an affordable price.

zencontrol invests heavily in research and testing, with stringent internal due diligence and compliance, and safety testing carried out by third parties.

IF IT DOESN'T MEET OUR HIGH STANDARDS FIRST, IT'S BACK TO THE DRAWING BOARD



2026 H1: January to June

LYNK	6	DUO	48
COMPLIANCE	10	Duo	
EXIT SIGNS	12	Duo.....	48
Razor		TWINSPOT	50
Razor.....	14	Twinspot	
Razor SM.....	16	Twinspot Pro HP.....	50
Razor SM Pendant.....	18	QUADRO	52
Boxit		Quadro	
Boxit Slim.....	20	Quadro Pro IP65.....	54
Boxit IP65.....	22	CONTROLLERS	56
Boxit Jumbo IP65.....	24	Emergency Timer	
Mercury		Emergency Timer.....	56
Mercury.....	26	AWAC-2	
Mercury Weatherproof Case.....	28	AWAC-2.....	58
Mercury Jumbo.....	30	Lynk Gateway	
Alectis		Lynk Gateway.....	60
Alectis IP65.....	32	BATTERY	62
LED FIRE	34	ACCESSORIES	63
Slimfire		SAFE TEST	65
Slimfire.....	36		
Ledfire Surface Mount IP65			
Ledfire Surface Mount IP65.....	38		
Ledfire			
Ledfire.....	40		
Ledfire Surface Mount			
Ledfire Surface Mount.....	42		
Dome			
Dome.....	44		

LYNK

WIRELESS CONTROL WITHOUT COMPLICATION OR MESS

Help meet regulatory compliance with **Lynk**, Ektor's wireless test and monitoring solution.

Simple and easy to use, the **Lynk Wireless Solution** reduces the substantial ongoing maintenance and testing costs required for emergency lighting compliance.

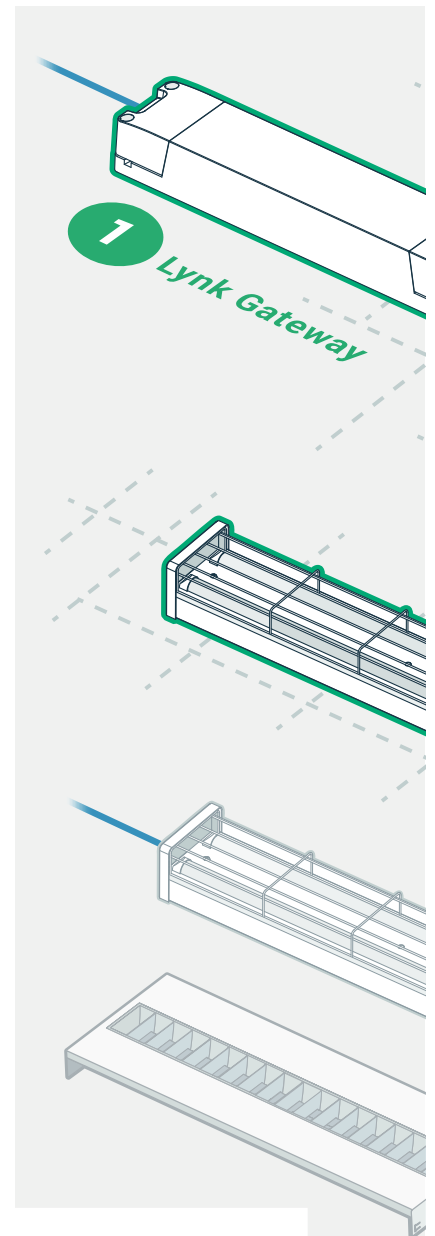
THE BEST WIRELESS EMERGENCY SOLUTION

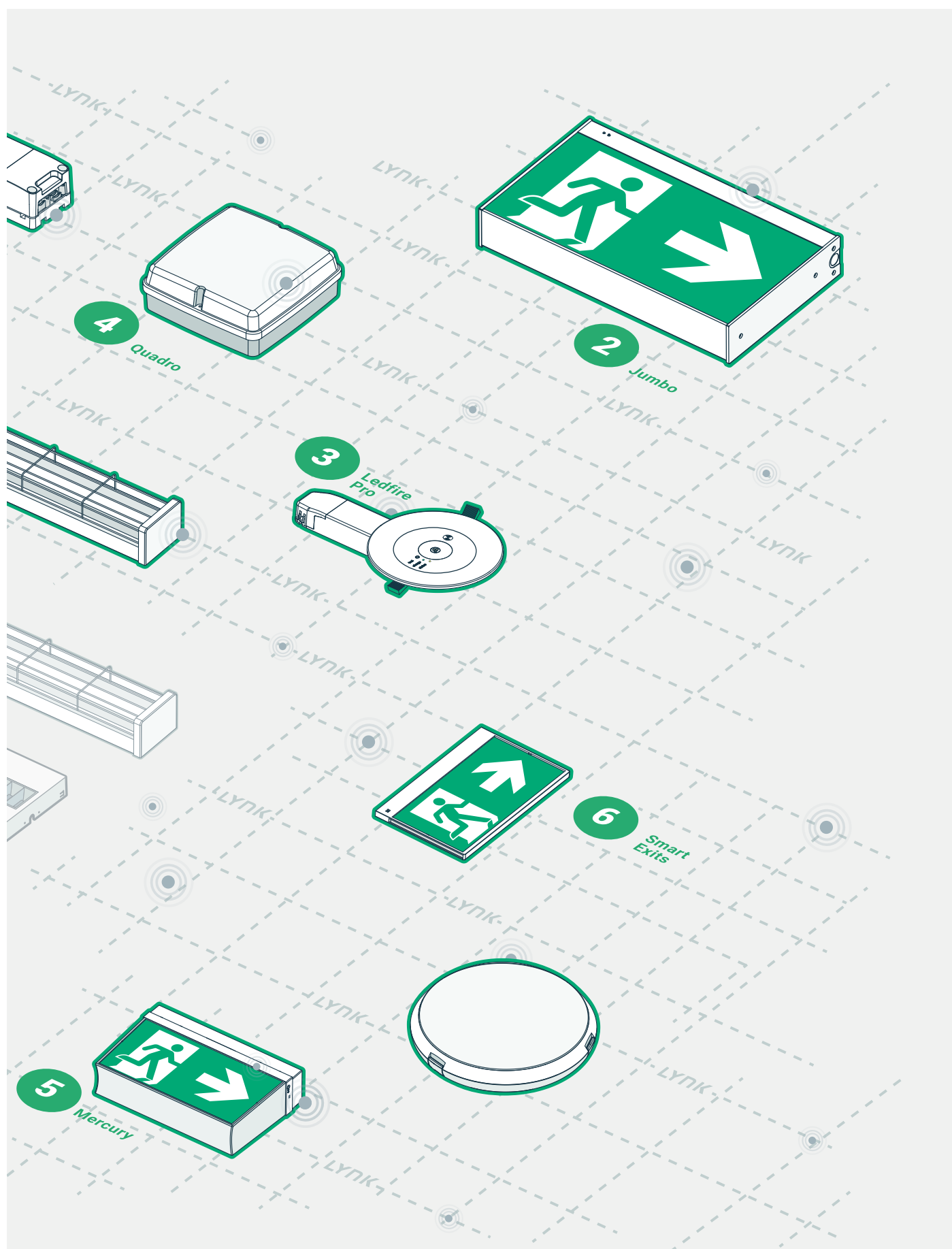
Lynk's sophisticated mesh connectivity exhibits real-time reporting, with expansion capacity across wired and wireless networks.

Behind a simple, easy-to-use interface, a powerful, self-linking, self-healing solution resides. Providing ultra-fast wireless connectivity, **Lynk** has no need for additional cables or wires, making it easy to deploy or retrofit.

Why Lynk?

- Built on DALI+ technology allowing for open source connectivity
- Easy to install with no additional wires or cables
- Suits any size installation
- Intelligent meshing technology with a powerful, self-linking and self-healing system
- Protected cloud-controlled platform allowing managed multi-user and multi-tenancy access controls
- Real-time reporting with expansion capacity across wired and wireless networks
- Built on IEC62386-104 - the only IEC standard for wireless lighting control





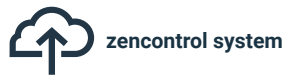
LYNK

REGULATORY COMPLIANCE

Save money and help to achieve building compliance with the Lynk Wireless Solution.

Lynk is designed to integrate and work with the zencontrol cloud platform, a system tested and certified to IEC62034 by TÜV Rheinland.

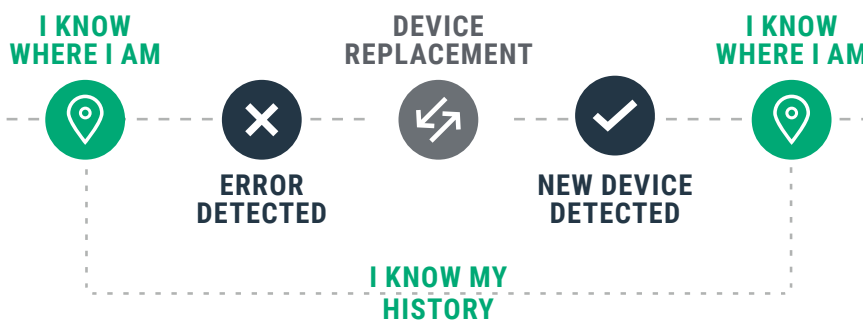
This additional testing ensures it meets the requirements of a safe and reliable monitoring system.



TEST MANAGEMENT & TRACEABILITY

Ektor emergency testing provides a full test management solution. Instead of tracking and testing individual emergency devices, the **Lynk** system is **based on the location of each unit**. With this method, the addition, replacement or removal of emergency devices maintains a full, 'through-life' traceability.

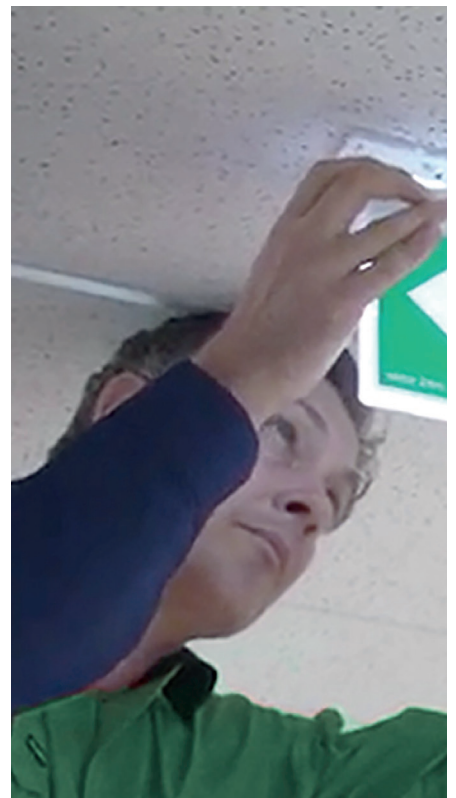
This test management system eliminates the issue of devices being removed from the network without due process. For each test session, all changes, repairs and results are tracked and reported together to provide full test details.



THREAD, WIRELESS MESH CONNECTIVITY

Lynk emergency products are equipped with **state-of-the-art wireless meshing technology**. This connects nearby devices, creating a network for control and reporting.


The self-healing mesh makes **Lynk** easy to deploy or retrofit, as the emergency luminaires require no additional wire. The Bluetooth commissioning interface provides installers a quick and easy connection to the device, making configuration simple.






AUTOMATIC BACKUP OF TEST RESULTS

For Site Managers, compliance is improved and liability is reduced with the zencontrol cloud platform. Integrated with *Lynk*, this solution automatically backs up and stores all test results and maintenance data off-site.

 **DEVICE REPLACEMENT**

 **HISTORY STORED IN THE CLOUD**

COMPLIANCE

Through design, testing, quality systems, and representation, Ektor proves its ongoing commitment to compliance and reliability.

THIRD-PARTY TESTING

Ektor third-party testing is carried out by NATA certified test laboratories (The National Association of Testing Authorities) and ILAC MRA laboratory accredited bodies.

Testing laboratories with an approved scope and certification from NATA and ILAC MRA produce test reports with either the NATA or ILAC MRA symbol. This official stamp is critical to ensure all tests have been performed correctly.

Overseas testing laboratories, with approved scope, who are authorised signatories to the ILAC mutual recognition arrangement (MRA), carry certification from their respective national agency.

Examples of valid certified reports are detailed below:

- Australia – NATA
- Australia/New Zealand – JAS-NAS
- China – CNAS
- Japan – JAB
- Germany – DakkS

QUALITY SYSTEM

Reliability, certification, procedure.

A product carrying safety certification does not guarantee the product supplied to market is safe. Changes in the supply chain, in-house and on-line testing, and other variables, all need to be managed to ensure a consistently safe product.

Our systems, standards and procedures will deliver consistently safe, reliable, and repeatedly positive and proven outcomes in manufacturing.



AUSTRALIAN OWNED

Ektor's emergency products are manufactured in Australian owned and operated factories, certified and audited to ISO9001:2015 and ISO14001:2015 and are Sedex registered. Quality and reliability are of the highest importance, demonstrated to our customers time and time again.

FULL-CYCLE TESTING

Every range in the Ektor suite is subject to a full-cycle test before being packed and shipped. This rigorous process can take up to 32 hours and includes a complete charge, discharge and re-charge, ensuring products meet the requirements of our customers and our environment.

DESIGN LIFE

Warranties form our guarantee and the assurance we will stand behind our products, but more important than a product warranty is its design life. Customers pay significantly when the warranty of the product does not reflect the design life. A reduced design life results in more replacements and costs through the life of the product, regardless of the warranty period. It is always best practice to consider the product design life to ensure the lowest total cost of ownership

Design life criteria takes into consideration the requirements and performance needs of the product type. The design life of each Ektor product is calculated at its maximum rated ambient temperature for a true representation.

To achieve the highest design life with all Ektor products we use only quality materials and manufacture to endure the harshest of operating conditions. The size and rating of all components, including the capacitors, are de-rated and sized to provide the longest possible design life. All LEDs, batteries, and the battery capacity are carefully considered so products meet the rated duration throughout their life.

Our expertise in battery technology and degradation allows us to design Ektor products with the longest possible battery life and lowest cost of ownership.



Our range of exits come in a variety of styles, sizes and mounting options. The Razor (pictured) is available in standard white or black. Its quality design ensures maximum luminance while reducing glare, external light reflection and unevenness.

EXIT SIGNS

FEATURES



EXCELLENT LUMINANCE

A quality design ensures maximum luminance while reducing glare, external light reflection and unevenness.



DECALS INCLUDED

Decals are included and can be mounted on both sides. They can also be purchased separately as an accessory.



LITHIUM BATTERIES

All Ektor exit signs use quality Lithium LiFePO₄ batteries. These are environmentally friendly and allow for maximum charging efficiency.

OVERVIEW

	MOUNTING TYPE				
	Ceiling	Wall	Recessed	Suspended	Rod
Boxit	✓	✓		✓	✓**
Jumbo	✓	✓		✓	
Mercury	✓	✓		✓	✓**
Razor	✓	✓	✓	✓*	✓**
Razor SM	✓	✓		✓*	✓*
Alectis	✓	✓	✓**		

* Available on selected models

** With accessory



EXIT SIGN

RAZOR



LYNK

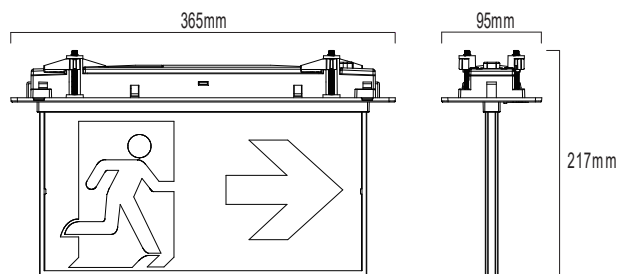


2026 H1 - January to June

PRODUCT RANGE (WHITE)		
ORDER CODE	PRODUCT NUMBER	SKU
EK-RAZOR-ST Razor Recessed Mount Exit Emergency Sign IP20 3 Hours 30m Self Test White ISO Legend Kit Included Left, Right, Up, Down	6971103536175	53617
EK-RAZOR-ONE Ektor One - 30m Razor recessed edgelit emergency exit - W/Wireless and DALI	6971103533532	53353

PRODUCT RANGE (BLACK)		
ORDER CODE	PRODUCT NUMBER	SKU
EK-RAZOR-ST-B Razor Recessed Mount Exit Emergency Sign IP20 3 Hours 30m Self Test ISO Legend Kit Included Left, Right, Up, Down	6971103536182	53618
EK-RAZOR-ONE-B Ektor One - 30m Razor recessed edgelit emergency exit - Black - W/Wireless and DALI	6971103533549	53354

LINE DRAWINGS



MECHANICAL

Body Material	Polycarbonate
Fitting Colour	White/Black
Mounting Type	Recessed mount
IP Rating	IP20

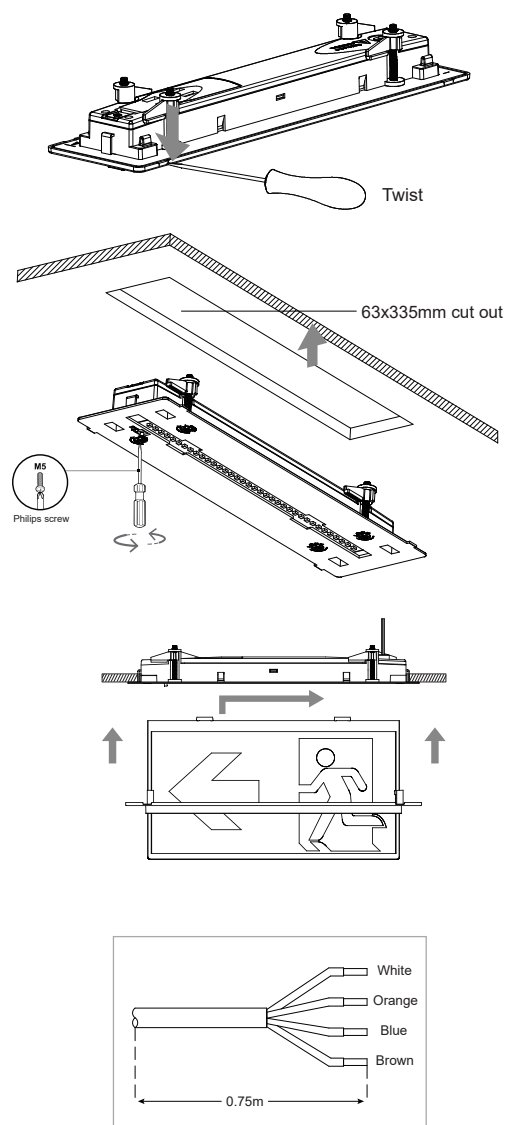
ELECTRICAL

Voltage	220-240V~
Iin	< 0.03A
Frequency	50/60Hz
Ambient Temperature	0-40°C
Class	II
Emergency Duration	180min
Battery Code	zc-batt-1A1-ACA
Battery Type	LiFePO ₄ 3.2V 1500mAh 4.8Wh
Battery Supply Current	180mA
Charging Time	24h
Charging Operation	Multi state
Charging Type	CC / CV
Battery service life	5 Years
Viewing Distance	30m
Wiring	4 Core Free end
CCT	6500k
Maintained max power consumption	2.8W
Maintained average power consumption	2.3W
L70(hours) >	60000h

RELEVANT STANDARDS

-	IEC 60598-1
-	IEC 60598-2-22
-	BS 5266-1
-	EN 62034
-	IEC 62386
-	EN 1838
-	ISO 3864 Part 1+3
-	ISO 7010

DIMENSIONS





EXIT SIGN

RAZOR SM



LYNK

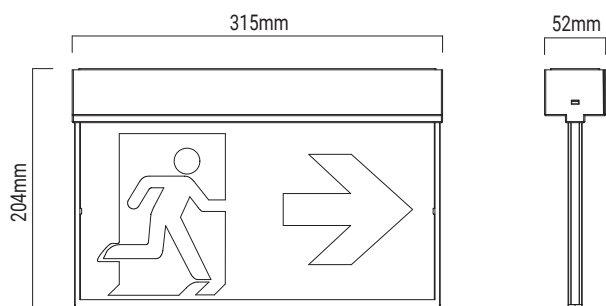


2026 H1 - January to June

PRODUCT RANGE (WHITE)		
ORDER CODE	PRODUCT NUMBER	SKU
EK-RAZOR-SM-ST Razor Surface Mounted Exit Emergency Sign IP20 3 Hours 30m White Self Test ISO Legend Kit Included Left, Right, Up, Down	6971103536236	53623
EK-RAZOR-SM-ONE Ektor One - 30m Razor surface-mount edgelit emergency exit - W/Wireless and DALI	6971103533556	53355

PRODUCT RANGE (WHITE)		
ORDER CODE	PRODUCT NUMBER	SKU
EK-RAZOR-SM-ST-B Razor Surface Mounted Exit Emergency Sign IP20 3 Hours 30m Black Self Test ISO Legend Kit Included Left, Right, Up, Down	6971103536243	53624
EK-RAZOR-SM-ONE-B Ektor One - 30m Razor surface-mount edgelit emergency exit - Black - W/Wireless and DALI	6971103533563	53356

LINE DRAWINGS



MECHANICAL

Body Material	Polycarbonate
Fitting Colour	White/Black
Mounting Type	Surface mount/Wall mount
IP Rating	IP20

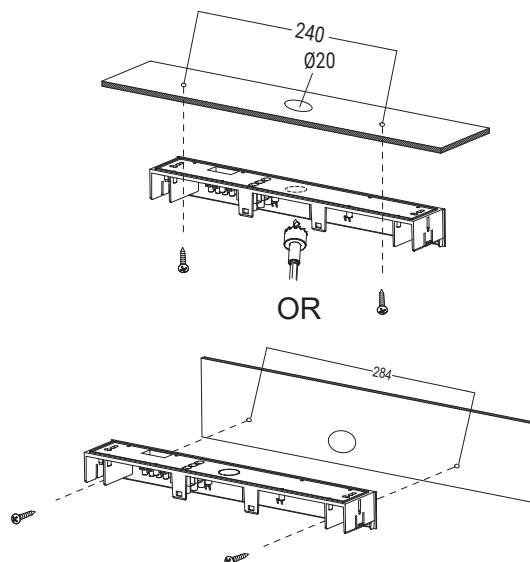
ELECTRICAL

Voltage	220-240V~
lin	< 0.03A
Frequency	50/60Hz
Ambient Temperature	0-40°C
Class	II
Emergency Duration	180min
Battery Code	zc-batt-1A1-ACA
Battery Type	LiFePO ₄ 3.2V 1500mAh 4.8Wh
Battery Supply Current	300mA
Charging Time	24h
Charging Operation	Multi state
Charging Type	CC / CV
Battery service life	5 Years
Viewing Distance	30m
Wiring	Push Terminal block (0.5-2.5mm ² □)
CCT	6500k
Maintained max power consumption	2.6W
Maintained average power consumption	2.3W
L70(hours) >	60000h

RELEVANT STANDARDS

-	IEC 60598-1
-	IEC 60598-2-22
-	BS 5266-1
-	EN 62034
-	IEC 62386
-	EN 1838
-	ISO 3864 Part 1+3
-	ISO 7010

DIMENSIONS



EXIT SIGN

ACCESSORY RANGE

SKU	ORDER CODE	DESCRIPTION
01990	EV-RODMOUNT-WHT	White Rod Mount Kit
02004	EV-RODMOUNT-BLK	Black Rod Mount Kit
15196	EV-RAZOR-SM-CORE-WB	Wall Bracket to suit EV-RAZOR-SM-CORE - White

RAZOR SM PENDANT



LYNK

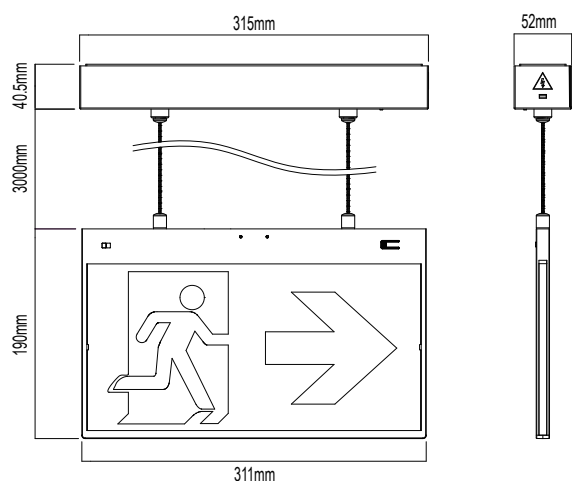


2026 H1 - January to June

PRODUCT RANGE (WHITE)		
ORDER CODE	PRODUCT NUMBER	SKU
EK-RAZOR-SP-ONE Ektor One - 30m Razor surface-pendant emergency exit - W/Wireless and DALI	6971103533570	53357

PRODUCT RANGE (BLACK)		
ORDER CODE	PRODUCT NUMBER	SKU
EK-RAZOR-SP-ONE-B Ektor One - 30m Razor surface-pendant emergency exit - Black - W/Wireless and DALI	6971103533587	53358

LINE DRAWINGS



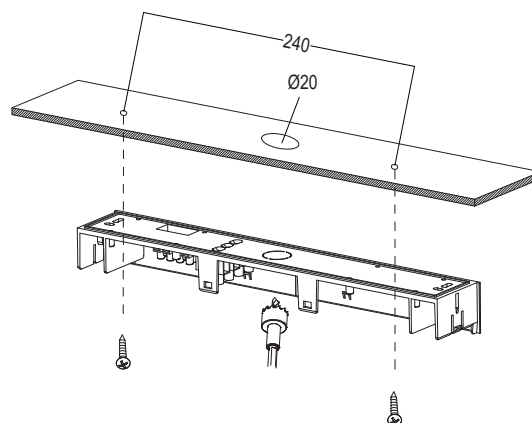
MECHANICAL

Body Material	Polycarbonate
Fitting Colour	White
Mounting Type	Surface mount
IP Rating	IP20

ELECTRICAL

Voltage	220-240V~
Iin	< 0.04A
Frequency	50/60Hz
Ambient Temperature	0-40°C
Class	II
Emergency Duration	180min
Battery Code	zc-batt-1A1-ACA
Battery Type	LiFePO ₄ 3.2V 1500mAh 4.8Wh
Battery Supply Current	300mA
Charging Time	16h
Charging Operation	Multi state
Charging Type	CC / CV
Battery service life	5 Years
Viewing Distance	30m
Wiring	Push Terminal block (0.5-2.5mm ² □)
CCT	6500k
Maintained max power consumption	2.6W
Maintained average power consumption	2.0W
L70(hours) >	36000h

DIMENSIONS



RELEVANT STANDARDS

-	IEC 60598-1
-	IEC 60598-2-22
-	BS 5266-1
-	EN 62034
-	IEC 62386
-	EN 1838
-	ISO 3864 Part 1+3
-	ISO 7010

BOXIT SLIM

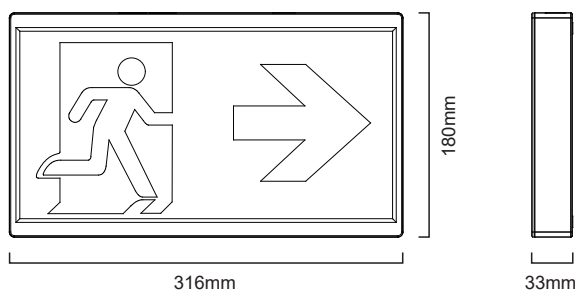


2026 H1 - January to June

PRODUCT RANGE (WHITE)		
ORDER CODE	PRODUCT NUMBER	SKU
EK-BOXIT-SLIM-ST Boxit Slim Wall Mount Emergency Exit Sign IP20 3 Hours 30m Self Test White ISO Legend Kit Included Left, Right, Up, Down	6971103532252	53225
EK-BOXIT-SLIM-ONE Ektor One - 30m Boxit slimline emergency exit - W/Wireless and DALI	6971103533600	53360

PRODUCT RANGE (BLACK)		
ORDER CODE	PRODUCT NUMBER	SKU
EK-BOXIT-SLIM-ST-B Boxit Slim Wall Mount Emergency Exit Sign IP20 3 Hours 30m Self Test ISO Legend Kit Included Left, Right, Up, Down	6971103536304	53630
EK-BOXIT-SLIM-ONE-B Ektor One - 30m Boxit slimline emergency exit - Black - W/Wireless and DALI	6971103533617	53361

LINE DRAWINGS



MECHANICAL

Body Material	Polycarbonate
Fitting Colour	White
Mounting Type	Surface mount/Wall mount
IP Rating	IP20

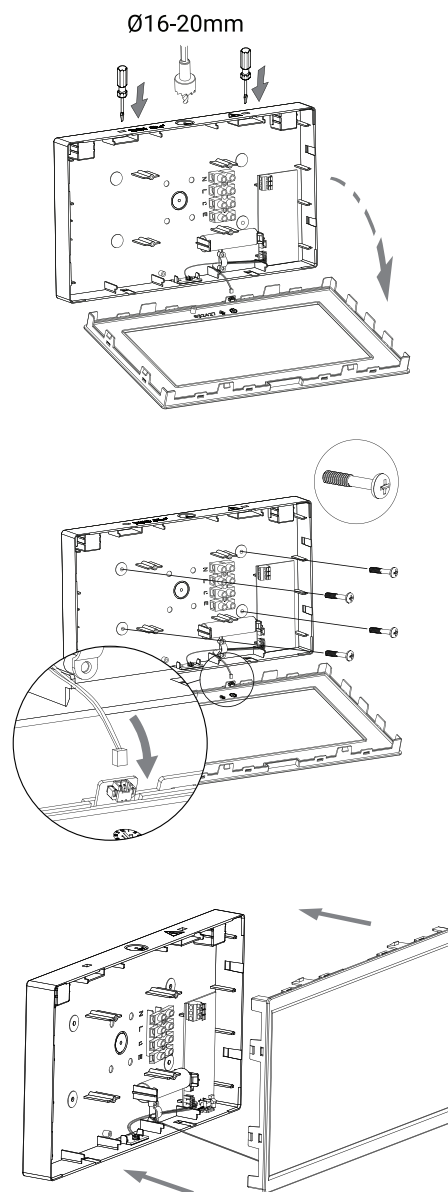
ELECTRICAL

Voltage	220-240V~
Iin	< 0.03A
Frequency	50/60Hz
Ambient Temperature	0-40°C
Class	II
Emergency Duration	180min
Battery Code	zc-batt-1A1-ACA
Battery Type	LiFePO ₄ 3.2V 1500mAh 4.8Wh
Battery Supply Current	300mA
Charging Time	24h
Charging Operation	Multi state
Charging Type	CC / CV
Battery service life	5 Years
Viewing Distance	30m
Wiring	Push Terminal block (0.5-2.5mm ² □)
CCT	6500k
Maintained max power consumption	2.6W
Maintained average power consumption	2.3W
L70(hours) >	60000h

RELEVANT STANDARDS

-	IEC 60598-1
-	IEC 60598-2-22
-	BS 5266-1
-	EN 62034
-	IEC 62386
-	EN 1838
-	ISO 3864 Part 1+3
-	ISO 7010

DIMENSIONS



EXIT SIGN

BOXIT IP65



LYNK

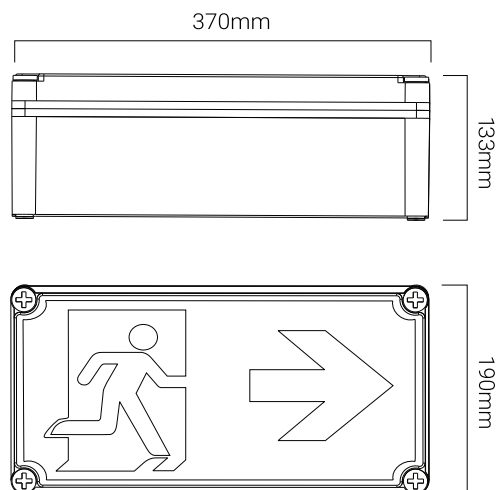


2026 H1 - January to June

PRODUCT RANGE (WHITE)

ORDER CODE	PRODUCT NUMBER	SKU
EK-BOXIT-IP65-ONE		
Ektor One - 30m Boxit wall-mount exit light IP65 - W/Wireless and DALI	6971103533594	53359

LINE DRAWINGS



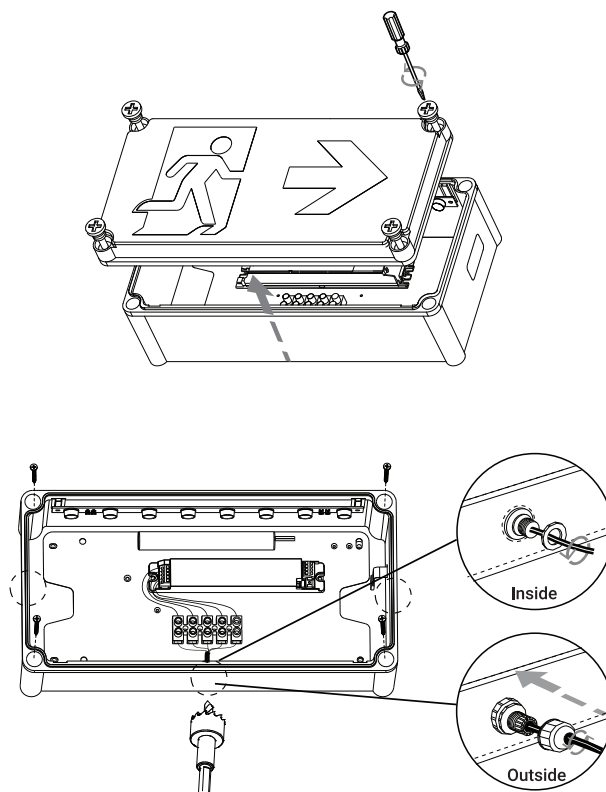
MECHANICAL

Body Material	Polycarbonate
Fitting Colour	White
Mounting Type	Surface mount
IP Rating	IP65
IK Rating	IK09

ELECTRICAL

Voltage	220-240V~
lin	< 0.03A
Frequency	50/60Hz
Ambient Temperature	0-40°C
Class	I
Emergency Duration	180min
Battery Code	zc-batt-2A1-AAA
Battery Type	LiFePO ₄ 6.4V 1500mAh 9.6Wh
Battery Supply Current	300mA
Charging Time	24h
Charging Operation	Multi state
Charging Type	CC / CV
Battery service life	5 Years
Viewing Distance	30m
Wiring	Screw Terminal block(0.5-16mm ² □)
CCT	6500k
Maintained max power consumption	2.5W
Maintained average power consumption	2.0W
L70(hours) >	60000h

DIMENSIONS



EXIT SIGN

RELEVANT STANDARDS

-	IEC 60598-1
-	IEC 60598-2-22
-	BS 5266-1
-	EN 62034
-	IEC 62386
-	EN 1838
-	ISO 3864 Part 1+3
-	ISO 7010

BOXIT JUMBO IP65



LYNK



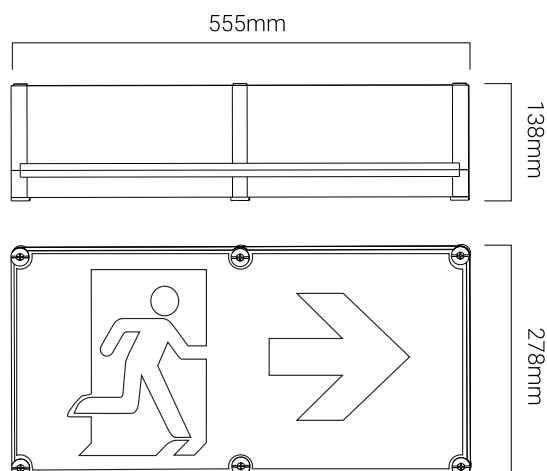
2026 H1 - January to June



PRODUCT RANGE (WHITE)

ORDER CODE	PRODUCT NUMBER	SKU
EK-BOXIT-IP65-JUMBO-ONE		
Ektor One - 40m Boxit wall-mount exit light IP65 - W/Wireless and DALI	6971103533358	53335

LINE DRAWINGS



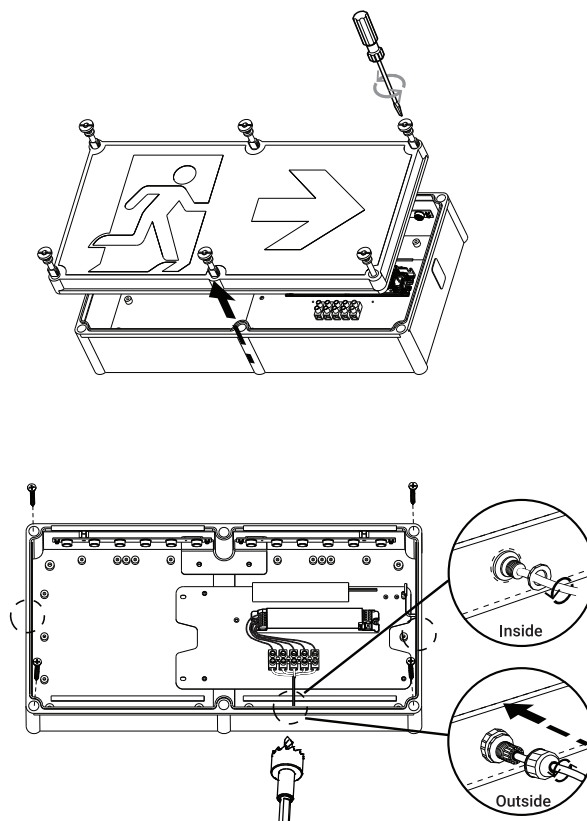
MECHANICAL

Body Material	Polycarbonate
Fitting Colour	White
Mounting Type	Surface mount
IP Rating	IP65
IK Rating	IK09

ELECTRICAL

Voltage	220-240V~
Iin	< 0.03A
Frequency	50/60Hz
Ambient Temperature	0-40°C
Class	I
Emergency Duration	180min
Battery Code	zc-batt-2B1-AAA
Battery Type	LiFePO ₄ 6.4V 3000mAh 19.2Wh
Battery Supply Current	500mA
Charging Time	24h
Charging Operation	Multi state
Charging Type	CC / CV
Battery service life	5 Years
Viewing Distance	50m
Wiring	Screw Terminal block(0.5-16mm ² □)
CCT	6500k
Maintained max power consumption	3.5W
Maintained average power consumption	3.0W
L70(hours) >	60000h

DIMENSIONS



EXIT SIGN

RELEVANT STANDARDS

-	IEC 60598-1
-	IEC 60598-2-22
-	BS 5266-1
-	EN 62034
-	IEC 62386
-	EN 1838
-	ISO 3864 Part 1+3
-	ISO 7010

MERCURY

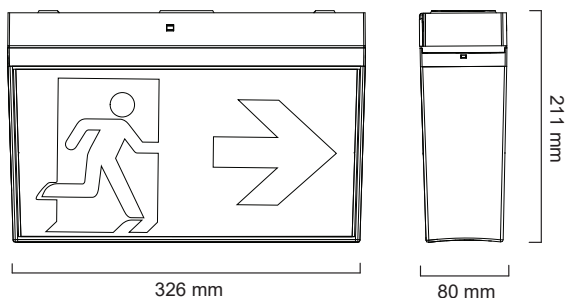


2026 H1 - January to June

PRODUCT RANGE (WHITE)		
ORDER CODE	PRODUCT NUMBER	SKU
EK-MERCURY-ST Mercury Surface Mounted Exit Emergency Sign White	6971103537769	53776
EK-MERCURY-ONE Ektor One - 30m Mercury emergency exit - W/ Wireless and DALI	6971103533501	53350

PRODUCT RANGE (BLACK)		
ORDER CODE	PRODUCT NUMBER	SKU
EK-MERCURY-ST-B Mercury Surface Mounted Exit Emergency Sign Self Test Black	6971103537776	53777
EK-MERCURY-ONE-B Ektor One - 30m Mercury emergency exit - Black - W/Wireless and DALI	6971103533518	53351

LINE DRAWINGS



MECHANICAL

Body Material	Polycarbonate
Fitting Colour	White
Mounting Type	Surface mount/Wall mount
IP Rating	IP20

ELECTRICAL

Voltage	220-240V~
lin	< 0.03A
Frequency	50/60Hz
Ambient Temperature	0-40°C
Class	II
Emergency Duration	180min
Battery Code	zc-batt-1A1-ACA
Battery Type	LiFePO ₄ 3.2V 1500mAh 4.8Wh
Battery Supply Current	330mA
Charging Time	24h
Charging Operation	Multi state
Charging Type	CC / CV
Battery service life	5 Years
Viewing Distance	30m
Wiring	Hard wired (16mm ² □)
CCT	6500k
Maintained max power consumption	2.5W
Maintained average power consumption	2.0W
L70(hours) >	60000h

RELEVANT STANDARDS

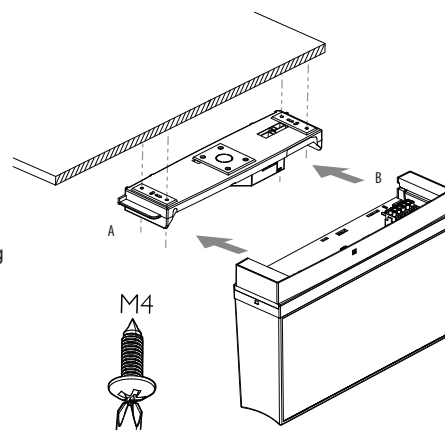
-	IEC 60598-1
-	IEC 60598-2-22
-	BS 5266-1
-	EN 62034
-	IEC 62386
-	EN 1838
-	ISO 3864 Part 1+3
-	ISO 7010

DIMENSIONS

MOUNTING

Mount cover and connect wiring to terminals.

Assemble the product by sliding the body into place.



ACCESSORY RANGE

SKU	ORDER CODE	DESCRIPTION
01990	EV-RODMOUNT-WHT	White Rod Mount Kit
02004	EV-RODMOUNT-BLK	Black Rod Mount Kit

MERCURY WEATHERPROOF CASE

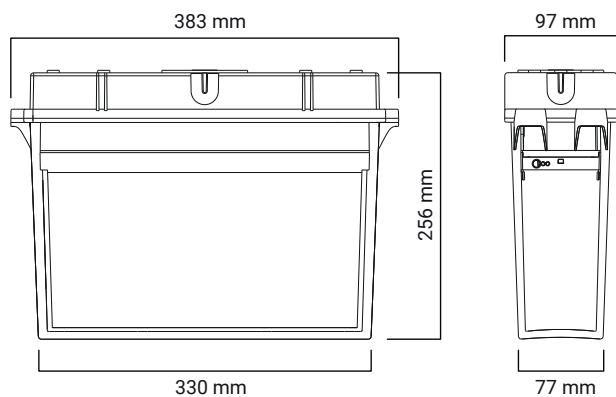


2026 H1 - January to June

PRODUCT RANGE (WHITE)		
ORDER CODE	PRODUCT NUMBER	SKU
EK-MERCURY-CASE-IP65 Weatherproof Case for Mercury	6971103538483	53848

PRODUCT RANGE (BLACK)		
ORDER CODE	PRODUCT NUMBER	SKU
EK-MERCURY-CASE-IP65-B Weatherproof Case for Mercury Black	6971103538490	53849

LINE DRAWINGS



MECHANICAL

Body Material	Polycarbonate
Fitting Colour	Gray/Black
Mounting Type	Surface mount
IP Rating	IP65
IK Rating	IK10

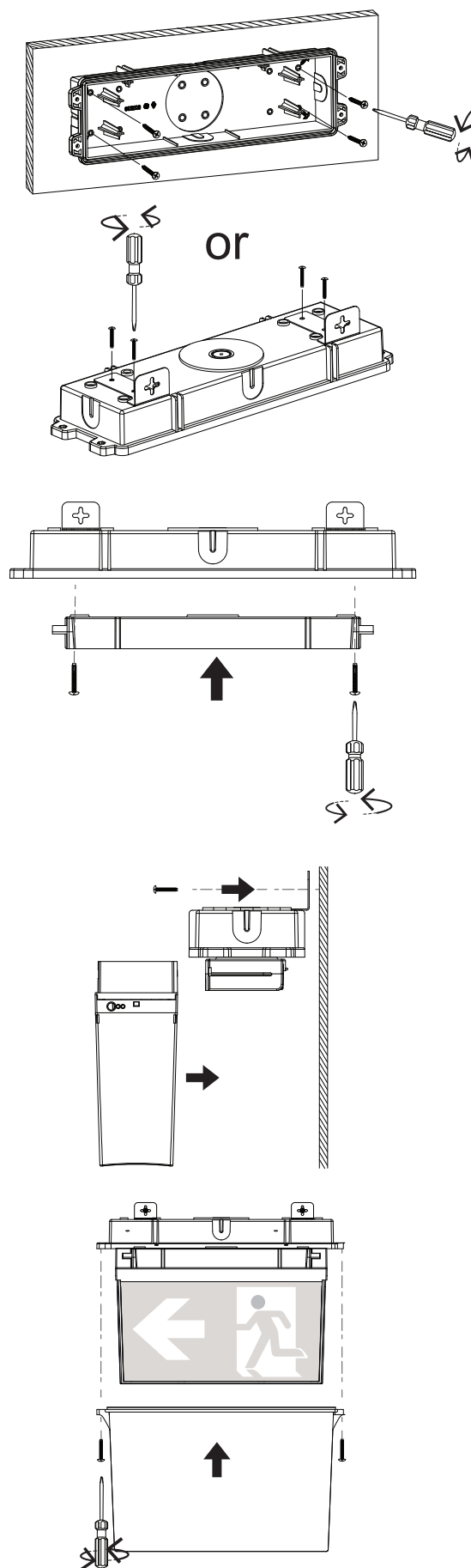
RELEVANT STANDARDS

- IEC 62262 (impact testing)
- IEC 60598.1 (IP testing)

ACCESSORY RANGE

SKU	ORDER CODE	DESCRIPTION
01990	EV-RODMOUNT-WHT	White Rod Mount Kit
02004	EV-RODMOUNT-BLK	Black Rod Mount Kit

DIMENSIONS



EXIT SIGN

MERCURY JUMBO



LYNK

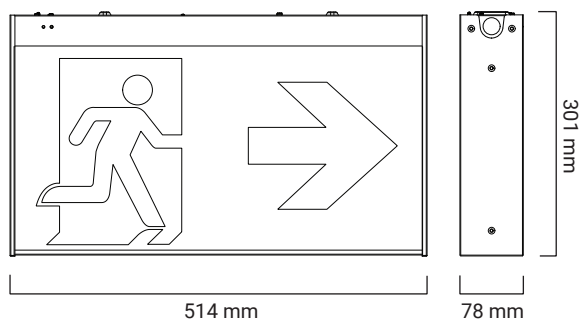


2026 H1 - January to June



PRODUCT RANGE (WHITE)		
ORDER CODE	PRODUCT NUMBER	SKU
EK-MERCURY-JUMBO-ONE		
Ektor One - 40m Mercury emergency exit - W/ Wireless and DALI	6971103533525	53352

LINE DRAWINGS



MECHANICAL

Body Material	Powder coated aluminium and PC
Fitting Colour	White
Mounting Type	Surface/suspended (Rod Mount Kit available)
IP Rating	IP20

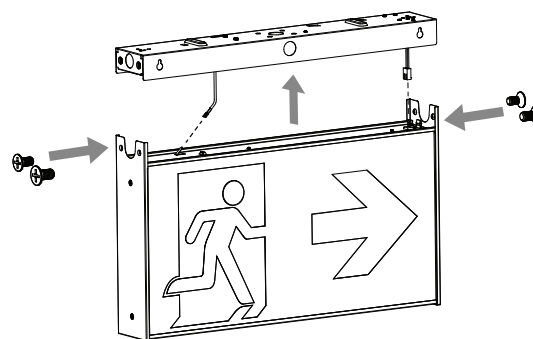
ELECTRICAL

Voltage	220-240V~
lin	< 0.03A
Frequency	50/60Hz
Ambient Temperature	0-40°C
Class	II
Emergency Duration	180min
Battery Code	zc-batt-2A1-AAA
Battery Type	LiFePO ₄ 6.4V 1500mAh 9.6Wh
Battery Supply Current	330mA
Charging Time	24h
Charging Operation	Multi state
Charging Type	CC / CV
Battery service life	5 Years
Viewing Distance	50m
Wiring	Hard wired (16mm ² □)
CCT	6500k
Maintained max power consumption	2.5W
Maintained average power consumption	2.0W
L70(hours) >	60000h

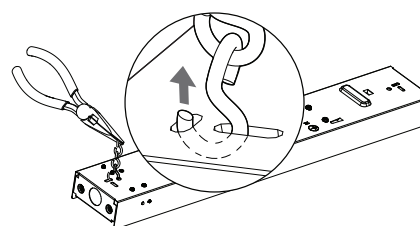
RELEVANT STANDARDS

- IEC 60598-1
- IEC 60598-2-22
- BS 5266-1
- EN 62034
- IEC 62386
- EN 1838
- ISO 3864 Part 1+3
- ISO 7010

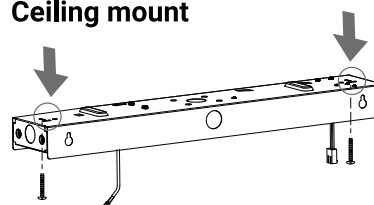
DIMENSIONS



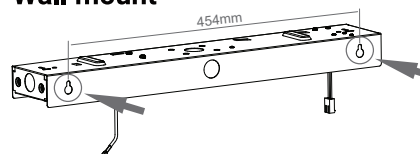
Jack chain mount



Ceiling mount



Wall mount



ALECTIS IP65



LYNK

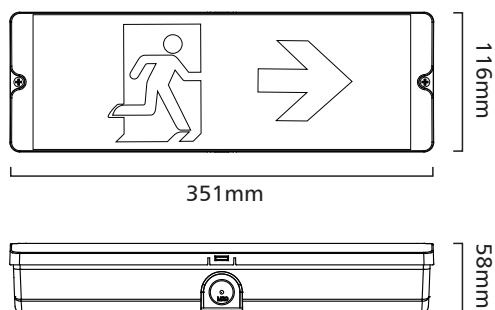


2026 H1 - January to June



PRODUCT RANGE (WHITE)		
ORDER CODE	PRODUCT NUMBER	SKU
EK-ALECTIS-IP65-ST Alectis Surface/Wall Mounted Emergency Bulkhead IP65 3 Hours 20m Self Test White ISO Legend Kit Included Left, Right, Up, Down	6971103536359	53635

LINE DRAWINGS



MECHANICAL

Body Material	Polycarbonate
Fitting Colour	Grey
Mounting Type	Surface mount
IP Rating	IP65

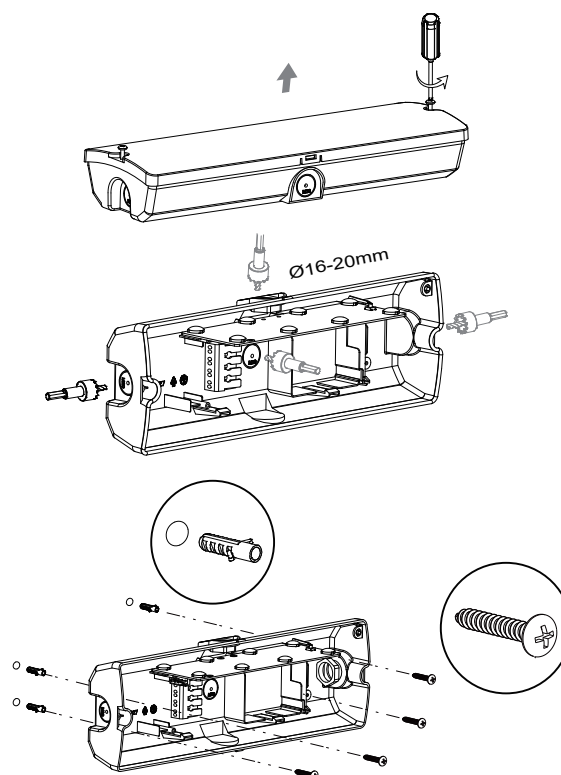
ELECTRICAL

Voltage	220-240V~
In	< 0.03A
Frequency	50/60Hz
Ambient Temperature	0-40°C
Class	II
Emergency Duration	180min
Battery Code	zc-batt-1A1-ACA
Battery Type	LiFePO ₄ 3.2V 1500mAh 4.8Wh
Battery Supply Current	330mA
Charging Time	24h
Charging Operation	Multi state
Charging Type	CC / CV
Battery service life	5 Years
Viewing Distance	20m (with signage)
Wiring	Push Terminal block (0.5-2.5mm ²)
CCT	6500k
Maintained max power consumption	3.5W
Maintained average power consumption	2.7W
L70(hours) >	60000h

RELEVANT STANDARDS

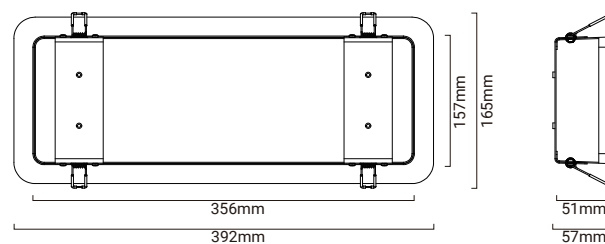
-	IEC 60598-1
-	IEC 60598-2-22
-	BS 5266-1
-	EN 62034
-	IEC 62386
-	EN 1838
-	ISO 3864 Part 1+3
-	ISO 7010

DIMENSIONS



ACCESSORY RANGE

SKU	ORDER CODE	DESCRIPTION
01990	EV-RODMOUNT-WHT	White Rod Mount Kit
02004	EV-RODMOUNT-BLK	Black Rod Mount Kit
53758	EK-ALECTIS-RECESS-KIT	Alectis Recessed Bracket White
	EK-ALECTIS-RECESS-KIT-B	Alectis Recessed Bracket Black





2026 H1 | January to June

Our emergency luminaires are available in recessed, rod and surface mount options, The Ledfire range (pictured) is a non-maintained, energy efficient emergency luminaire with reliable design and quality Lithium (LiFePO_4) iron phosphate batteries.

LED FIRE / SLIM FIRE

FEATURES



QUALITY COMPONENTS

All Ektor Ledfires are built with quality components and undergo extensive testing.



CHOOSE YOUR STYLE

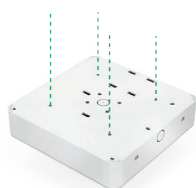
Ektor Ledfires are available in black or white finishes to suit your decor



POWER SAVING

Save money without compromising on design through the low power consumption of the Ledfire.

MOUNTING OPTIONS



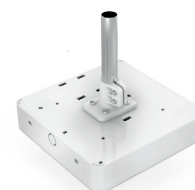
SURFACE

Surface mount models allow for easy mounting onto exposed concrete with rear or side cable entry.



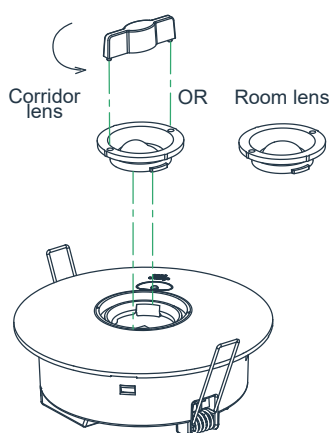
RECESSED

Recessed mounting suits a wide range of hole sizes and comes with a removable outer ring for added installation flexibility.



ROD MOUNTING

These kits allow surface mount Ledfires to be suspended at a lower height.



INTER CHANG ABLE LENS

* Available on selected models

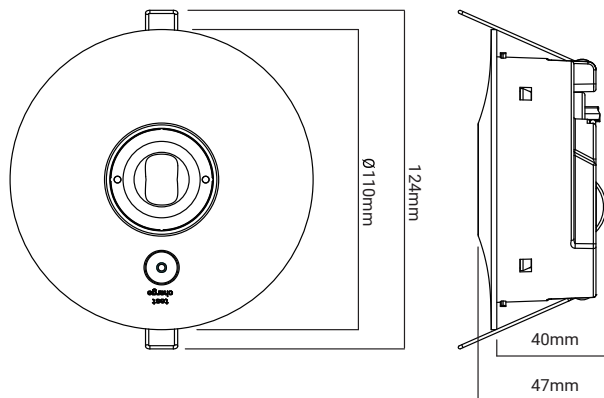
SLIMFIRE



2026 H1 - January to June

PRODUCT RANGE (WHITE)		
ORDER CODE	PRODUCT NUMBER	SKU
EK-SLIMFIRE-ST Ledfire Basic Emergency Luminaire Self Test White	6971103538421	53842
EK-SLIMFIRE-ONE Ektor One - Slimfire - Low profile emergency luminaire - W/Wireless and DALI	6971103530739	53073

PRODUCT RANGE (BLACK)		
ORDER CODE	PRODUCT NUMBER	SKU
EK-SLIMFIRE-ST-B Ledfire Basic Emergency Luminaire Self Test Black	6971103538438	53843
EK-SLIMFIRE-ONE-B Ektor One - Slimfire - Low profile emergency luminaire - Black - W/Wireless and DALI	6971103530746	53074

LINE DRAWINGS

MECHANICAL

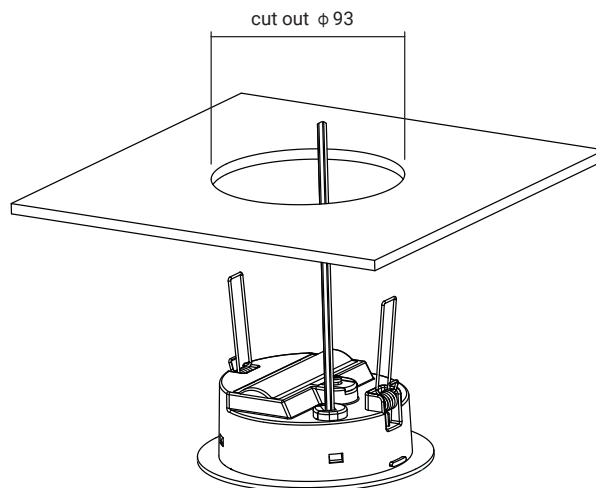
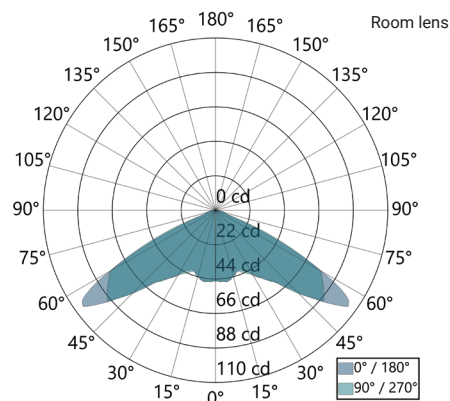
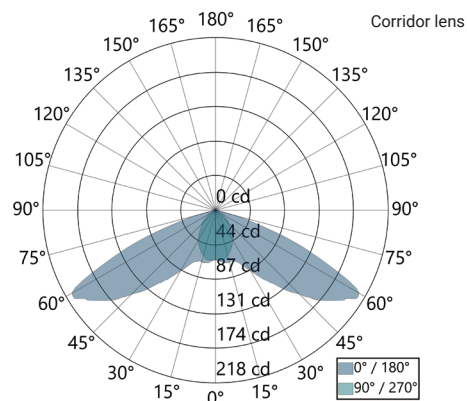
Body Material	Polycarbonate
Fitting Colour	White/Black
Mounting Type	Recessed mount
IP Rating	IP44 (surface only)

ELECTRICAL

Voltage	220-240V~
lin	< 0.01A
Frequency	50/60Hz
Ambient Temperature	0-40°C
Class	II
Emergency Duration	180min
Battery Code	zc-batt-1A1-ACA
Battery Type	LiFePO ₄ 3.2V 3400mAh 10.88Wh
Battery Supply Current	800mA
Charging Time	24h
Charging Operation	Multi state
Charging Type	CC / CV
Battery service life	5 Years
Wiring	Free core
CCT	6500k
Max power consumption	1.5W
Average power consumption	0.4W
Emergency Lm:	Room lens 240 / Corridor lens 235

RELEVANT STANDARDS

-	IEC 60598-1
-	IEC 60598-2-22
-	BS 5266-1
-	EN 62034
-	IEC 62386
-	EN 1838

DIMENSIONS

LUMINOUS INTENSITY DISTRIBUTION DIAGRAM


Corridor lens

SPACING TABLE	0.5 lux				1 lux			
Mounting Height								
2.5m	6.69	13.37	6.64	3.32	6.04	12.07	5.46	2.73
3.0m	7.62	15.23	7.28	3.64	6.58	13.17	5.69	2.85
4.0m	8.98	17.97	8.00	4.00	7.85	15.70	6.03	3.01
5.0m	10.25	20.50	8.24	4.12	8.66	17.32	6.01	3.00

Room lens

SPACING TABLE	0.5 lux				1 lux			
Mounting Height								
2.5m	5.24	10.48	4.70	9.40	9.40	4.70	4.70	4.70
3.0m	5.89	11.78	5.20	10.39	10.39	5.20	5.20	5.20
4.0m	7.22	14.43	6.04	12.09	11.22	5.61	5.61	5.61
5.0m	8.16	16.32	4.66	9.33	11.11	5.55	5.55	5.55

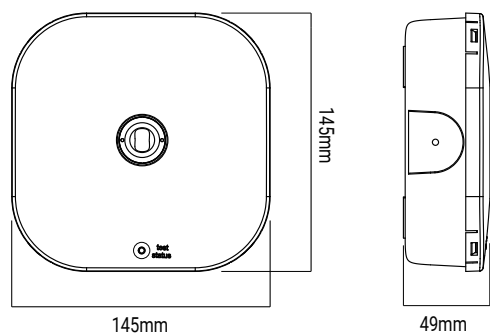
SLIMFIRE SURFACE MOUNT IP65



2026 H1 January to June

PRODUCT RANGE (WHITE)		
ORDER CODE	PRODUCT NUMBER	SKU
EK-SLIMFIRE-SM-IP65-ST Ledfire Surface Mounted Emergency IP65 3 Hours Self Test White	6971103536113	53611
EK-SLIMFIRE-SM-ONE-IP65 Ektor One - Slimfire Core Surface Mount IP65 - W/Wireless and DALI	6971103530753	53075

PRODUCT RANGE (BLACK)		
ORDER CODE	PRODUCT NUMBER	SKU
EK-SLIMFIRE-SM-IP65-ST-B Ledfire Surface Mounted Emergency IP65 3 Hours Self Test Black	6971103536120	53612
EK-SLIMFIRE-SM-ONE-IP65-B Ektor One - Slimfire Core Surface Mount IP65 - Black - W/Wireless and DALI	6971103530760	53076

LINE DRAWINGS

MECHANICAL

Body Material	Polycarbonate
Fitting Colour	White/Black
Mounting Type	Surface mount/Rod mount
IP Rating	IP65

ELECTRICAL

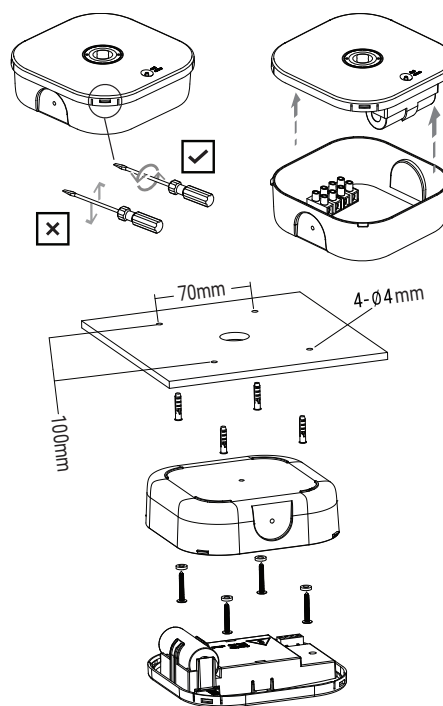
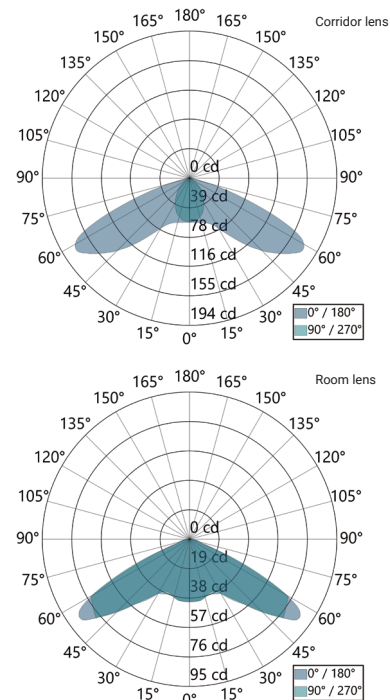
Voltage	220-240V~
lin	< 0.03A
Frequency	50/60Hz
Ambient Temperature	0-40°C
Class	II
Emergency Duration	180min
Battery Code	zc-batt-1B1-ACA
Battery Type	LiFePO ₄ 3.2V 3400mAh 10.88Wh
Battery Supply Current	850mA
Charging Time	16h
Charging Operation	Multi state
Charging Type	CC / CV
Battery service life	5 Years
Wiring	Push Terminal block (0.5-2.5mm ² □)
CCT	6500k
Max power consumption	2W
Average power consumption	0.75W
Emergency Lm:	Room lens 202 / Corridor lens 200

RELEVANT STANDARDS

- IEC 60598-1
- IEC 60598-2-22
- BS 5266-1
- EN 62034
- IEC 62386
- EN 1838

ACCESSORY RANGE

SKU	ORDER CODE	DESCRIPTION
01990	EV-RODMOUNT-WHT	White Rod Mount Kit
02004	EV-RODMOUNT-BLK	Black Rod Mount Kit

DIMENSIONS

LUMINOUS INTENSITY DISTRIBUTION DIAGRAM


Corridor lens

Mounting Height	0.5 lux				1 lux			
	2.5m	6.19	12.38	6.40	3.20	5.49	10.97	5.27
3.0m	6.90	13.80	7.03	3.51	6.15	12.30	5.50	2.75
4.0m	8.39	16.77	7.73	3.86	7.22	14.43	5.71	2.85
5.0m	9.60	19.21	7.95	3.98	8.00	16.00	5.54	2.77

Room lens

Mounting Height	0.5 lux				1 lux			
	2.5m	4.80	9.60	10.48	5.24	4.33	8.66	9.21
3.0m	5.53	11.05	11.78	5.89	4.90	9.79	10.19	5.09
4.0m	6.66	13.31	13.86	6.93	5.61	11.22	10.81	5.41
5.0m	7.55	15.11	14.83	7.41	3.44	6.87	7.81	3.91

LED FIRE



2026 H1 - January to June

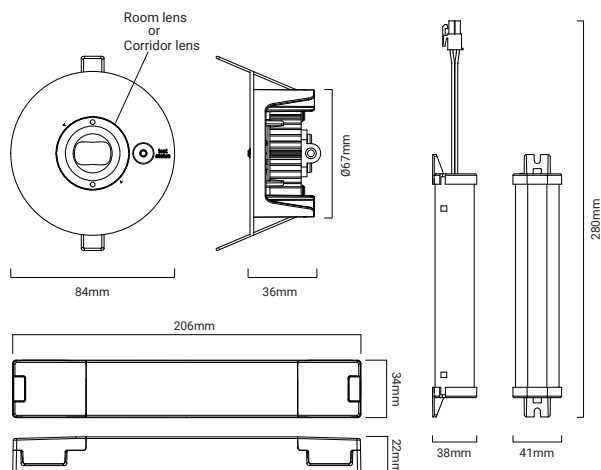
PRODUCT RANGE (WHITE)

ORDER CODE	PRODUCT NUMBER	SKU
EK-LED FIRE-ONE Ektor One Ledfire Emergency Luminaire - SER II - D80 - W/Wireless and DALI	6971103530784	53078

PRODUCT RANGE (BLACK)

ORDER CODE	PRODUCT NUMBER	SKU
EK-LED FIRE-ONE-B Ektor One Ledfire Emergency Luminaire - SER II - D80 - Black - W/Wireless and DALI	6971103530791	53079

LINE DRAWINGS



MECHANICAL

Body Material	Polycarbonate
Fitting Colour	White
Mounting Type	Recessed mount
IP Rating	IP20

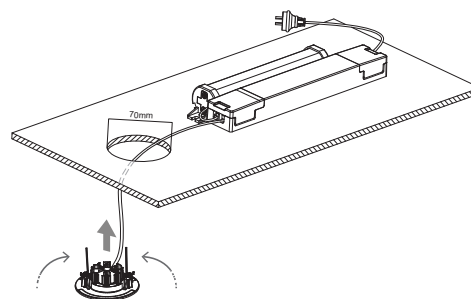
ELECTRICAL

Voltage	220-240V~
Iin	< 0.02A
Frequency	50/60Hz
Ambient Temperature	0-40°C
Class	II
Emergency Duration	180min
Battery Code	zc-batt-2B1-AAA
Battery Type	LiFePO4 6.4V 3000mAh 19.2Wh
Battery Supply Current	400mA
Charging Time	24h
Charging Operation	Multi state
Charging Type	CC / CV
Battery service life	5 Years
Wiring	4 Core Free End
CCT	6500k
Max power consumption	1.5W
Average power consumption	0.5W
Emergency Lm: Room lens 378 / Corridor lens 347	

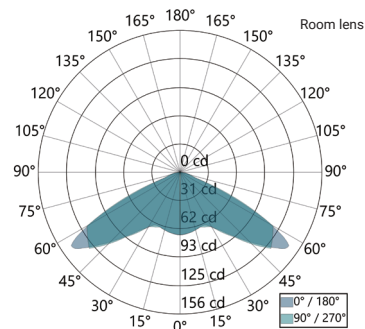
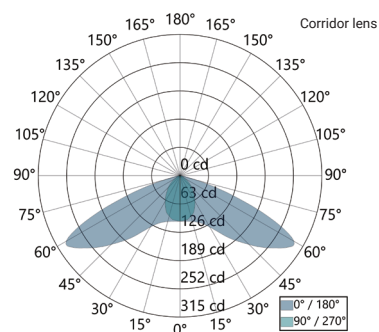
RELEVANT STANDARDS

-	IEC 60598-1
-	IEC 60598-2-22
-	BS 5266-1
-	EN 62034
-	IEC 62386
-	EN 1838

DIMENSIONS



LUMINOUS INTENSITY DISTRIBUTION DIAGRAM



Corridor lens

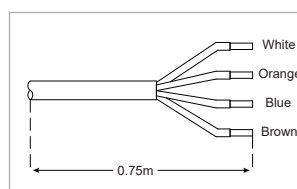
SPACING TABLE	0.5 lux				1 lux			
Mounting Height								
2.5m	6.87	13.74	7.28	3.64	6.19	12.38	6.17	3.09
3.0m	7.82	15.63	8.11	4.05	6.90	13.80	6.66	3.33
4.0m	9.42	18.85	9.20	4.60	8.39	16.77	7.20	3.60
5.0m	10.97	21.94	9.83	4.91	9.40	18.81	7.54	3.77

Room lens

SPACING TABLE	0.5 lux				1 lux			
Mounting Height								
2.5m	5.36	10.72	11.23	5.62	4.80	9.60	10.03	5.01
3.0m	6.02	12.03	12.87	6.43	5.41	10.82	11.28	5.64
4.0m	7.37	14.73	15.37	7.68	6.53	13.05	13.05	6.53
5.0m	8.49	16.98	17.32	8.66	7.41	14.83	13.76	6.88

ACCESSORY RANGE

SKU	ORDER CODE
607276	JUNCTION BOX



LED FIRE SURFACE MOUNT



LYNK

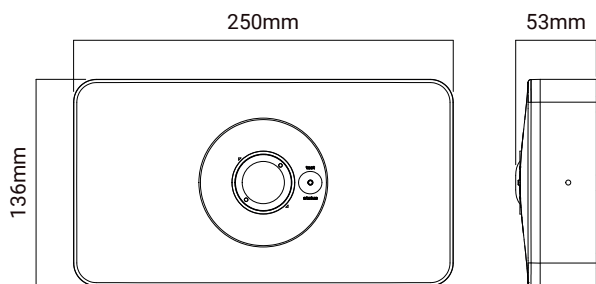


2026 H1 - January to June

PRODUCT RANGE (WHITE)		
ORDER CODE	PRODUCT NUMBER	SKU
EK-LED FIRE-SM-ONE-IP65 Ektor One - Ledfire Surface Mount IP65 - W/ Wireless and DALI	6971103531415	53141

PRODUCT RANGE (BLACK)		
ORDER CODE	PRODUCT NUMBER	SKU
EK-LED FIRE-SM-ONE-IP65-B Ektor One - Ledfire Surface Mount IP65 - Black - W/Wireless and DALI	6971103531507	53150

LINE DRAWINGS



MECHANICAL

Body Material	Polycarbonate
Fitting Colour	White/Black
Mounting Type	Surface mount
IP Rating	IP65

ELECTRICAL

Voltage	220-240V~
lin	< 0.03A
Frequency	50/60Hz
Ambient Temperature	0-40°C
Class	I
Emergency Duration	180min
Battery Code	zc-batt-1A3-AEB
Battery Type	LiFePO ₄ 3.2V 3000mAh 15.36Wh
Battery Supply Current	400mA
Charging Time	24h
Charging Operation	Multi state
Charging Type	CC / CV
Battery service life	5 Years
Wiring	Terminal block (0.5-16mm ² □)
CCT	6500k
Max power consumption	1.5W
Average power consumption	<0.5W
Emergency Lm: Room lens 378 / Corridor lens 347	

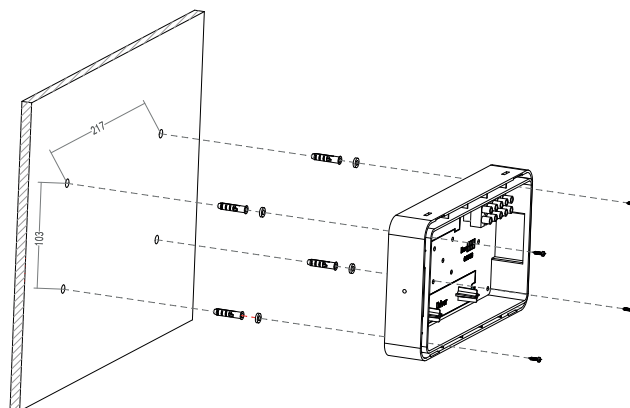
RELEVANT STANDARDS

-	IEC 60598-1
-	IEC 60598-2-22
-	BS 5266-1
-	EN 62034
-	IEC 62386
-	EN 1838

ACCESSORY RANGE

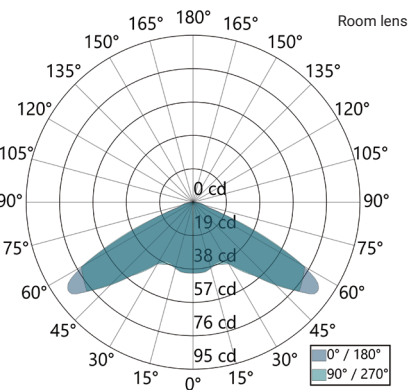
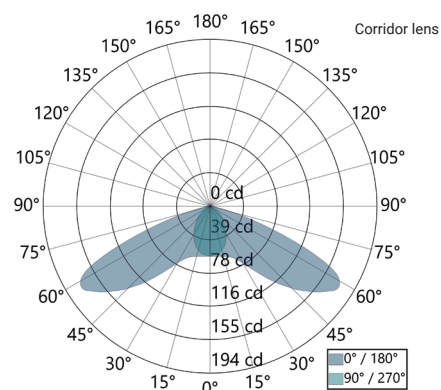
SKU	ORDER CODE	DESCRIPTION
01990	EV-RODMOUNT-WHT	White Rod Mount Kit
02004	EV-RODMOUNT-BLK	Black Rod Mount Kit

DIMENSIONS



LED FIRE

LUMINOUS INTENSITY DISTRIBUTION DIAGRAM



Corridor lens

SPACING TABLE				
Mounting Height	0.5 lux		1 lux	
2.5m	6.19	12.38	5.49	10.97
3.0m	6.90	13.80	6.15	12.30
4.0m	8.39	16.77	7.22	14.43
5.0m	9.60	19.21	8.00	16.00

Room lens

SPACING TABLE				
Mounting Height	0.5 lux		1 lux	
2.5m	4.80	9.60	4.33	8.66
3.0m	5.53	11.05	4.90	9.79
4.0m	6.66	13.31	5.61	11.22
5.0m	7.55	15.11	3.44	6.87



LEDFIRE

DOME



LYNK

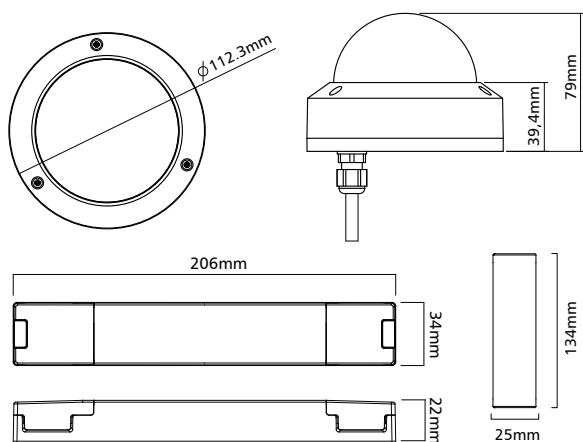


2026 H1 - January to June



PRODUCT RANGE (WHITE)		
ORDER CODE	PRODUCT NUMBER	SKU
EK-DOME-SM-ONE Ektor One - Dome vandal resistant fitting Complete IP65 - W/Wireless and DALI	6971103533631	53363

LINE DRAWINGS



MECHANICAL

Body Material	Polycarbonate & AL
Fitting Colour	White/Black
Mounting Type	Recessed mount
IP Rating	IP65
IK Rating	IK10

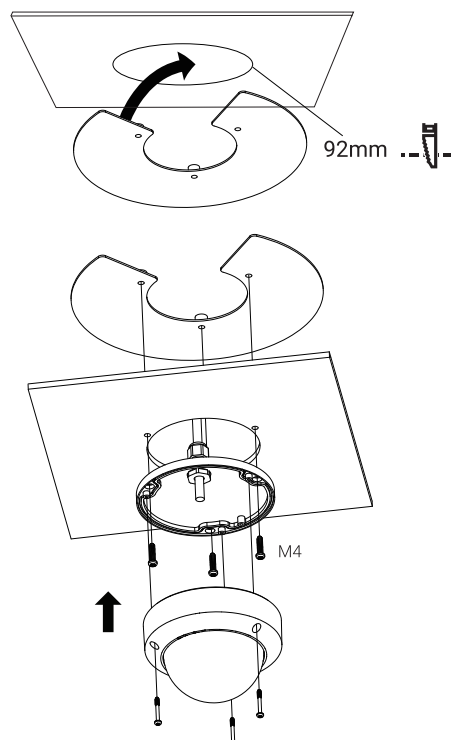
ELECTRICAL

Voltage	220-240V~
Iin	< 0.1A
Frequency	50/60Hz
Ambient Temperature	0-40°C
Class	III
Emergency Duration	180min
Battery Code	zc-batt-2B1-AAA
Battery Type	LiFePO ₄ 6.4V 3000mAh 19.2Wh
Battery Supply Current	586mA
Charging Time	16h
Charging Operation	Multi state
Charging Type	CC / CV
Battery service life	5 Years
Wiring	4 Core Free End
CCT	6500k
Max power consumption	2.5W
Average power consumption	<0.5W
Emergency Lm: Room lens 308 / Corridor lens 300	

RELEVANT STANDARDS

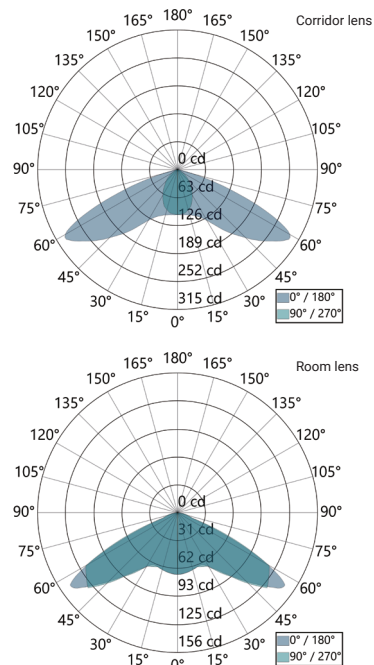
-	IEC 60598-1
-	IEC 60598-2-22
-	BS 5266-1
-	EN 62034
-	IEC 62386
-	EN 1838

DIMENSIONS



LED FIRE

LUMINOUS INTENSITY DISTRIBUTION DIAGRAM



Corridor lens

SPACING TABLE	0.5 lux				1 lux			
Mounting Height								
2.5m	6.87	13.74	7.28	3.64	6.19	12.38	6.17	3.09
3.0m	7.82	15.63	8.11	4.05	6.90	13.80	6.66	3.33
4.0m	9.42	18.85	9.20	4.60	8.39	16.77	7.20	3.60
5.0m	10.97	21.94	9.83	4.91	9.40	18.81	7.54	3.77

Room lens

SPACING TABLE	0.5 lux				1 lux			
Mounting Height								
2.5m	5.36	10.72	11.23	5.62	4.80	9.60	10.03	5.01
3.0m	6.02	12.03	12.87	6.43	5.41	10.82	11.28	5.64
4.0m	7.37	14.73	15.37	7.68	6.53	13.05	13.05	6.53
5.0m	8.49	16.98	17.32	8.66	7.41	14.83	13.76	6.88



The Twinspot (pictured) with powerful dual floodlights and an IP65 rating, is perfect for indoor or outdoor use. Available in black or white and suitable for applications where traditional fittings are difficult to mount. The Twinspot features two moveable heads, allowing light to be directed where it's needed most.

DUO/TWINSPOT

FEATURES



WEATHERPROOF

For those more demanding environments, the Twinspot provides levels of protection against dust and harsh weather.



LITHIUM BATTERIES

All Twinspots use quality Lithium LiFePO₄ batteries. These are environmentally friendly and allow for maximum charging efficiency.



LYNK

Connect emergency products into a wireless mesh for simpler and easier emergency testing and monitoring.*

MOVEMENT



DOWNWARD MOVEMENT

Up to 40-degree headlight downward range of movement.



SIDEWAYS MOVEMENT

Up to 45-degree headlight sideways movement.



UPWARD MOVEMENT

Up to 40-degree headlight upward range of movement.

* Available on selected models

DUO

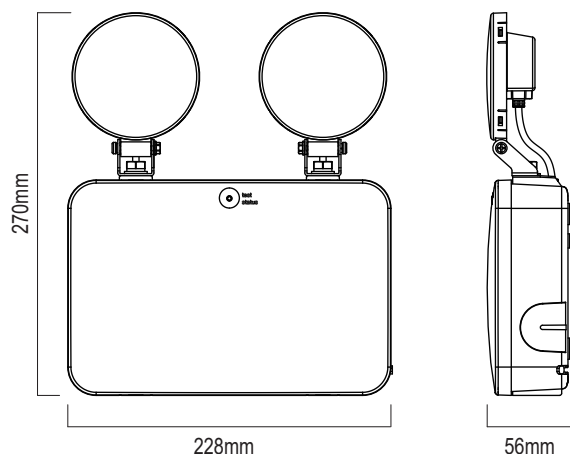


2026 H1 - January to June

PRODUCT RANGE (WHITE)		
ORDER CODE	PRODUCT NUMBER	SKU
EK-DUO-IP65-ST Duo Surface/Wall Mounted Twin Spot Emergency IP65 3 Hours Self Test White	6971103535994	53599
EK-DUO-ONE-IP65 Ektor One - Emergency weatherproof luminaire - W/Wireless and DALI	6971103531514	53151

PRODUCT RANGE (WHITE)		
ORDER CODE	PRODUCT NUMBER	SKU
EK-DUO-IP65-ST-B Duo Surface/Wall Mounted Twin Spot Emergency IP65 3 Hours Self Test Black	6971103536007	53600
EK-DUO-ONE-IP65-B Ektor One - Emergency weatherproof luminaire - Black - W/Wireless and DALI	6971103531521	53152

LINE DRAWINGS



MECHANICAL

Body Material	Polycarbonate
Fitting Colour	White/Black
Mounting Type	Wall mount
IP Rating	IP65

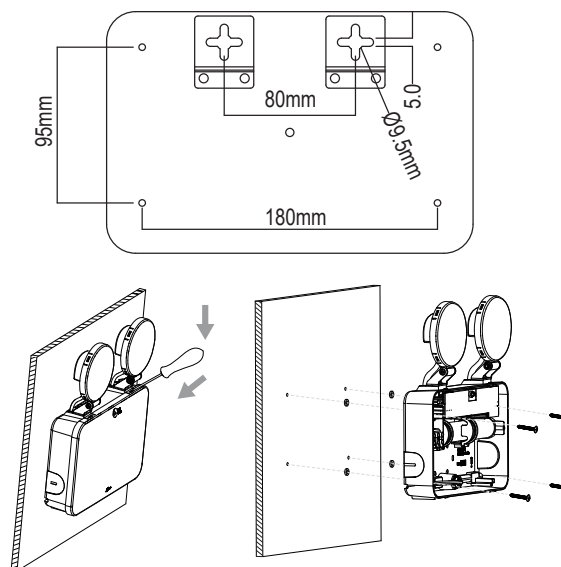
ELECTRICAL

Voltage	220-240V~
lin	< 0.01A
Frequency	50/60Hz
Ambient Temperature	0-40°C
Class	II
Emergency Duration	180min
Battery Code	zc-batt-1B1-ACA
Battery Type	LiFePO ₄ 3.2V 3400mAh 10.88Wh
Battery Supply Current	250mA
Charging Time	24h
Charging Operation	Multi state
Charging Type	CC / CV
Battery service life	5 Years
Wiring	Push Terminal block (0.5-2.5mm ² □)
CCT	6500k
Max power consumption	2.5W
Average power consumption	0.6W
Emergency Lm:	130x2

RELEVANT STANDARDS

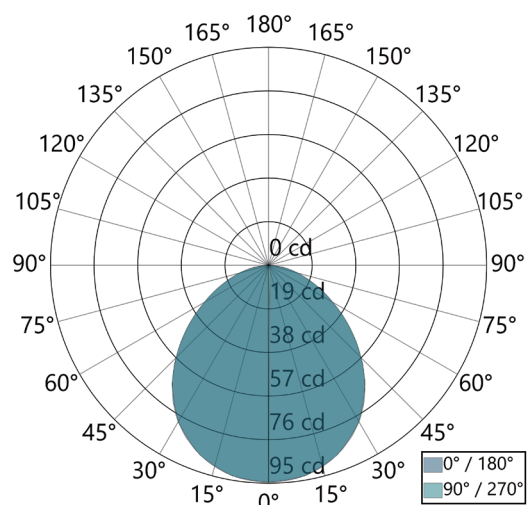
-	IEC 60598-1
-	IEC 60598-2-22
-	BS 5266-1
-	EN 62034
-	IEC 62386
-	EN 1838

DIMENSIONS



DUO

LUMINOUS INTENSITY DISTRIBUTION DIAGRAM



TWINSPOT PRO HP



2026 H1 - January to June

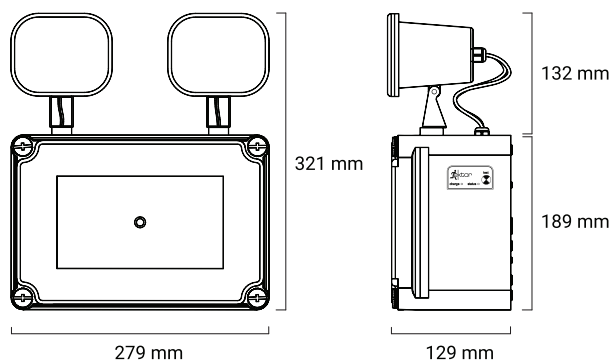
PRODUCT RANGE (WHITE)

ORDER CODE	PRODUCT NUMBER	SKU
EK-TWINSPOT-ONE-IP65 Ektor One - Twinspot emergency IP65 luminaire - W/Wireless and DALI	6971103533488	53348

PRODUCT RANGE (BLACK)

ORDER CODE	PRODUCT NUMBER	SKU
EK-TWINSPOT-ONE-IP65-B Ektor One - Twinspot emergency IP65 luminaire- Black - W/Wireless and DALI	6971103533495	53349

LINE DRAWINGS



MECHANICAL

Body Material	Polycarbonate
Fitting Colour	White/Black
Mounting Type	Wall mount
IP Rating	IP65

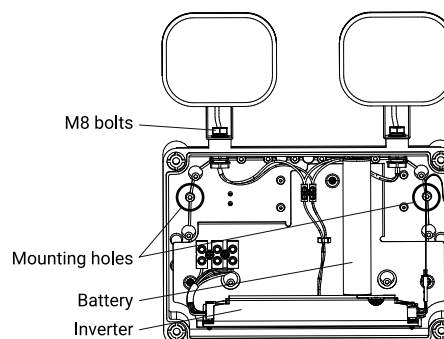
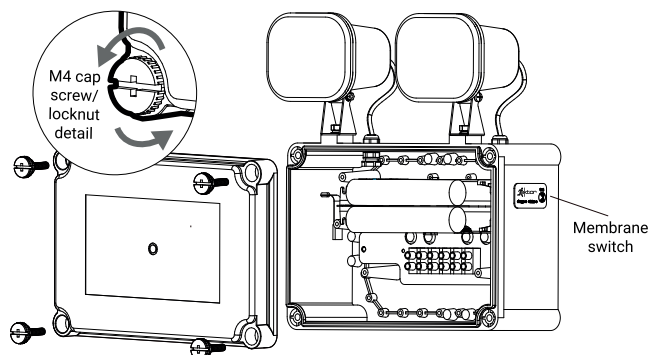
ELECTRICAL

Voltage	220-240V~
Iin	< 0.04A
Frequency	50/60Hz
Ambient Temperature	0-40°C
Class	I
Emergency Duration	180min
Battery Code	zc-batt-2B1-AAA x2
Battery Type	LiFePO ₄ 6.4V 3000mAh 19.2Wh
Battery Supply Current	650mA x2
Charging Time	24h
Charging Operation	Multi state
Charging Type	CC / CV
Battery service life	5 Years
Wiring	Terminal block (0.5-6.0mm ² □)
CCT	6500k
Max power consumption	<3.5W
Average power consumption	<2.0W
Emergency Lm:	500 x2

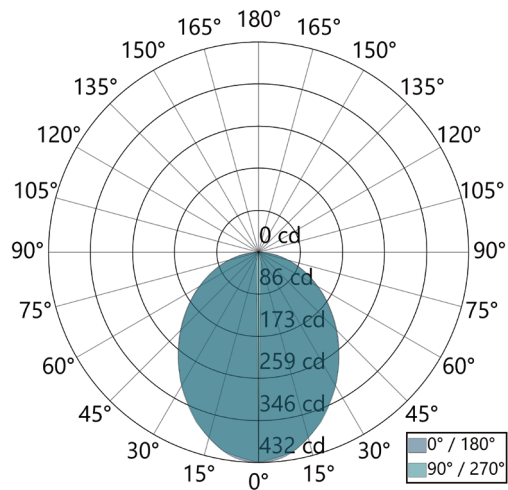
RELEVANT STANDARDS

-	IEC 60598-1
-	IEC 60598-2-22
-	BS 5266-1
-	EN 62034
-	IEC 62386
-	EN 1838

DIMENSIONS



LUMINOUS INTENSITY DISTRIBUTION DIAGRAM





Sturdy IK08 square bulkhead (pictured) with IP65 weatherproof rating, tri-color control and corridor function is a safe choice. Emergency and non-emergency models available, with or without sensor.

QUADRO

FEATURES



SELF TEST

Reduce ongoing site time and costs by automating easy testing with this smart emergency.



CORRIDOR MODE

Corridor mode, optimised for use in walkways. Available on Advanced and Professional models.



WIRELESS MESH

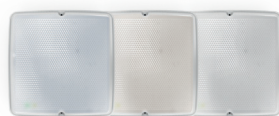
With zencontrol technology the Quadro will automatically test and sync data to the zencontrol IoT cloud.

OVERVIEW



MICROWAVE MOTION SENSORS

Optimise and save energy with your lights. Both emergency and non-emergency models come with a sensor option.



COLOUR CHANGE OPTIONS

Advanced models are available in tri-colour. Professional models have colour tuneable white, allowing adjustment for a better working environment.



WEATHERPROOF RATINGS

For demanding environments, the Quadro provides protection against dust and weather with a IP65 rating and impact with an IK08 rating.



QUADRO

QUADRO PRO IP65

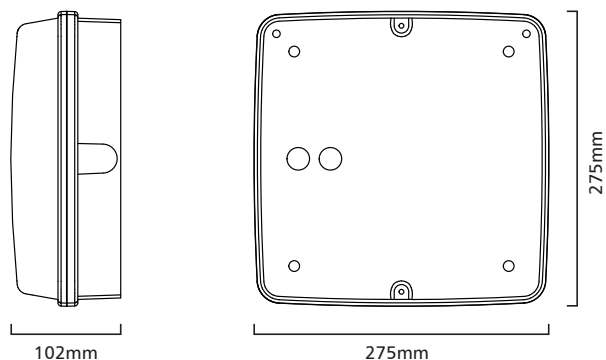


LYNK



2026 H1 - January to June

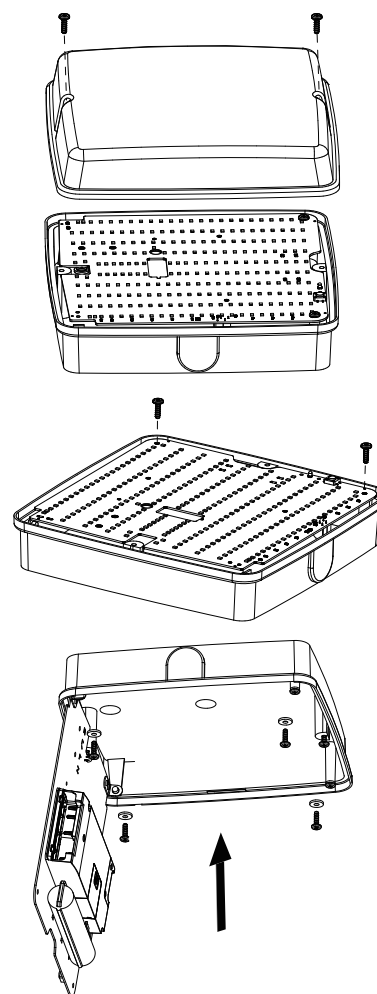
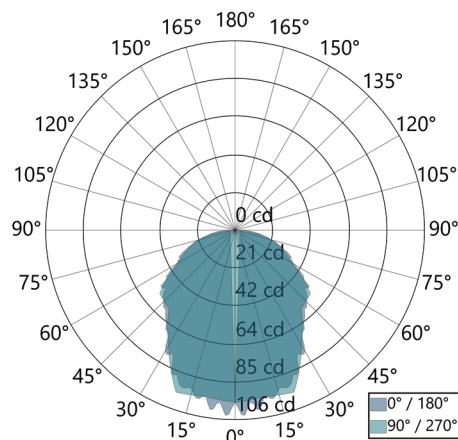
PRODUCT RANGE		
ORDER CODE	PRODUCT NUMBER	SKU
EK-QUADRO-ONE-IP65-EM-S-TRI Ektor One - Quadro LED Emergency Bunker Luminaire IP65 - W/Wireless and DALI	6971103532238	53223

LINE DRAWINGS

MECHANICAL

Body Material	Polycarbonate
Fitting Colour	White
Mounting Type	Surface mount
IP Rating	IP65

ELECTRICAL

	NO EM	EM
Voltage	220-240V~	220-240V~
Iin	< 0.13A	< 0.13A
Frequency	50/60Hz	50/60Hz
Ambient Temperature	0-40°C	0-40°C
Class	II	II
Emergency Duration	\	180min
Battery Code	\	zc-batt-2B1-AAA
Battery Type	\	LiFePO ₄ 6.4V 3000mAh 19.2Wh
Battery Supply Current	\	250mA
Charging Time	\	16h
Charging Operation	\	Multi state
Charging Type	\	CC / CV
Battery service life	\	5 Years
Wiring	Terminal block (0.5-6.0mm ² □)	
CCT	\	Adjustable (DALI)
Maintained max power consumption		26.5W 2.65W
Maintained average power consumption		24W 24W
Non-Maintained max power consumption		2W 2W
Non-Maintained average power consumption		0.5W 0.5W
Lm:	2279 @	3000K CCT _(AC)
Lm:	2374 @	4000K CCT _(AC)
Lm:	2352 @	6000K CCT _(AC)
Emergency Lm:	280 @	6000K

DIMENSIONS

LUMINOUS INTENSITY DISTRIBUTION DIAGRAM

RELEVANT STANDARDS

- IEC 60598-1
- IEC 60598-2-22
- BS 5266-1
- EN 62034
- IEC 62386
- EN 1838

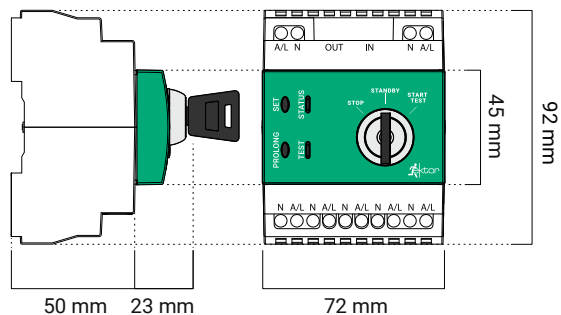
EMERGENCY TIMER



2026 H1: January to June

PRODUCT RANGE		
ORDER CODE	PRODUCT NUMBER	SKU
EK-EMERGENCY-TIMER Emergency Test Switch	6971103538537	53853

PRODUCT RANGE		
ORDER CODE	PRODUCT NUMBER	SKU
EK-EMERGENCY-TIMER-BASIC Emergency Test Switch Basic	6971103538841	53884

LINE DRAWINGS

MECHANICAL

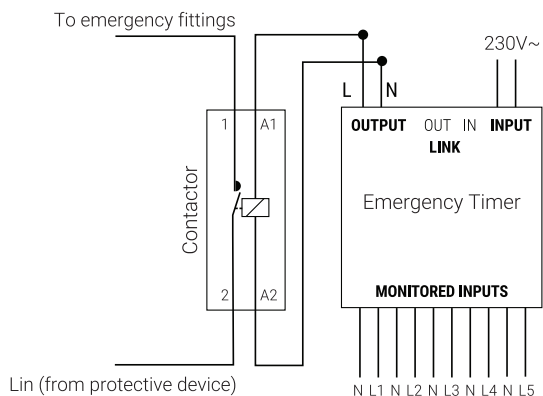
Body Material	Polycarbonate
Fitting Colour	White/Green
Mounting Type	DIN Rail (35mm)
IP Rating	IP20

ELECTRICAL

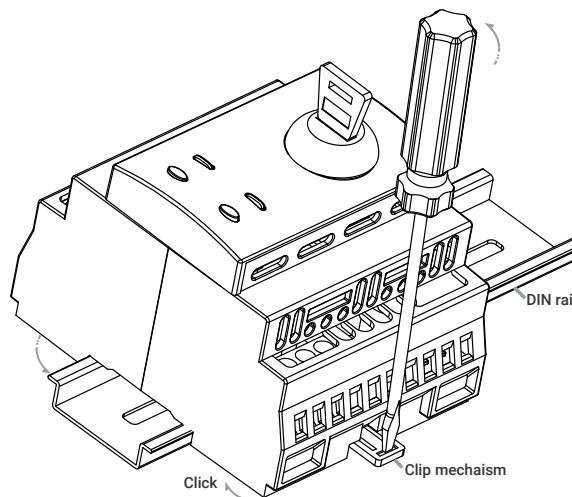
Voltage	220-240V~
lin	< 0.02A
Frequency	50/60Hz
Ambient Temperature	0-40°C
Class	II
Wiring	Terminal block (0.5-6.0mm ² □)

WIRE DIAGRAM

The Emergency Test Switch is designed to be used with a Normally Closed (NC) contactor (**NOT PROVIDED**). Recommended contactors are CLIPSAL 4CNT1/1NC or HAGER ESC227

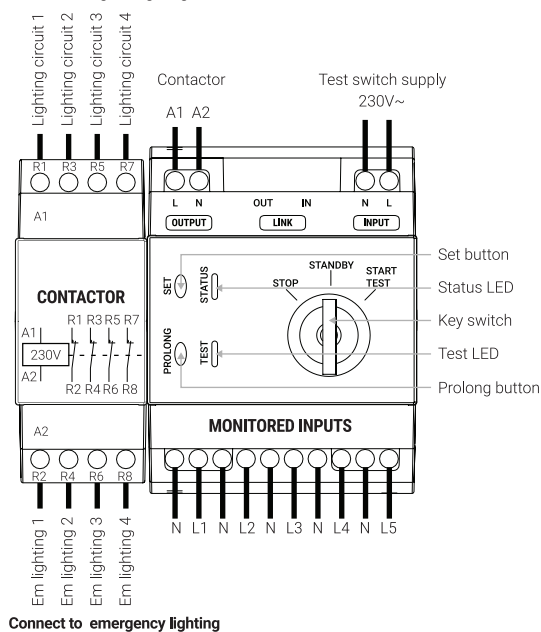


This product is not designed to be used without a suitable NC contactor.

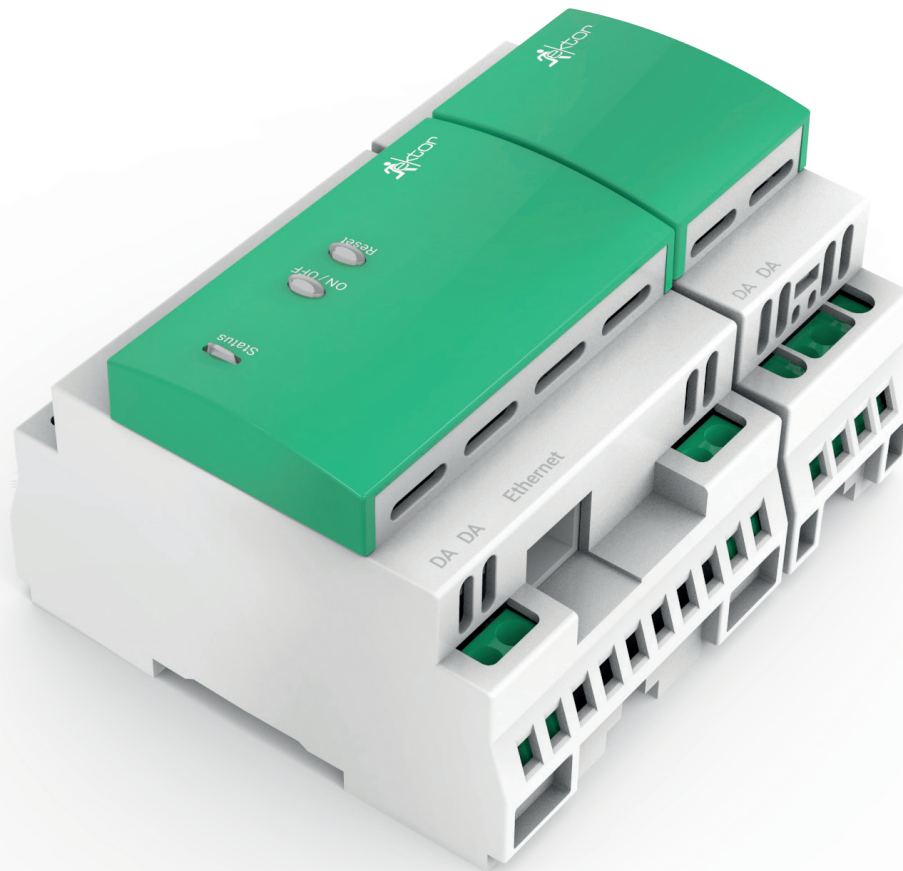
DIMENSIONS

WIRE DIAGRAM(BASIC)

The Emergency Test Switch is designed to be used with a Normally Closed (NC) contactor. Ensure emergency circuits power fittings are in the same area as the matching regular lighting circuit. Join each emergency circuit neutral to earth lighting circuit neutral separately. Monitored wiring is only used within centrally supplied systems

Connect to regular lighting after MCB/RCD

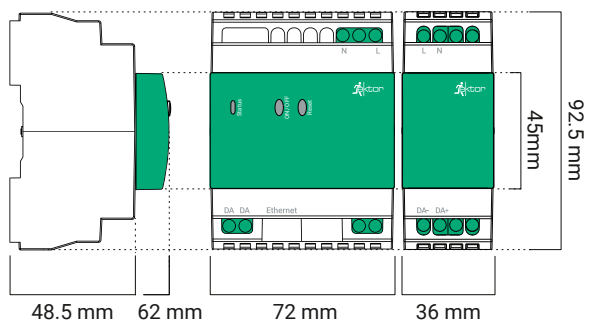


AWAC-2



2026 H1 January to June

PRODUCT RANGE		
ORDER CODE	PRODUCT NUMBER	SKU
EK-AWAC-2-KIT Advanced Wired Application Controller, Ethernet DALI gateway with power supply	6971103538544	53854

LINE DRAWINGS

MECHANICAL

Body Material	Polycarbonate
Fitting Colour	White/Green
Mounting Type	DIN Rail (35mm)
IP Rating	IP20

CONTROLLER OPERATIONAL INFORMATION

Voltage	220-240V~
Frequency	50/60Hz
Control system	DALI-2
DALI line current	2 mA
Ethernet	10 / 100 TCP / IP Ethernet
Ambient temp.	0 - 40°C
Class	II
Wiring	1 - 4mm ² Strip 6 - 7 mm

POWER SUPPLY OPERATIONAL INFORMATION

Voltage	220-240V~
Frequency	50/60Hz
Control system	DALI-2
Guaranteed supply current	235 mA
Maximum supply current	250 mA
DALI voltage	16.5 V nominal line voltage
Ambient temp.	0 - 45°C
Class	II
Wiring	1 - 4mm ² Strip 6 - 7 mm

RELEVANT STANDARDS

-	IEC 61347-2-11
-	IEC 60950-1
-	IEC 62386-103
-	EN 55015
-	EN 55022
-	CISPR 15
-	CISPR 22

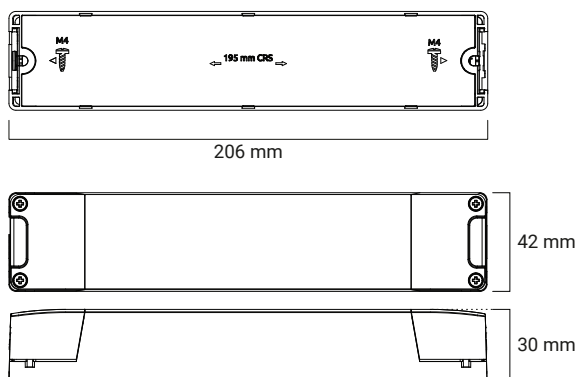
LYNK GATEWAY

LYNK



2026 H1: January to June

PRODUCT RANGE		
ORDER CODE	PRODUCT NUMBER	SKU
EK-GATEWAY-LK Ektor LYNK Gateway, Wireless Application Controller	6971103538551	53855

LINE DRAWINGS

MECHANICAL

Body Material	Polycarbonate
Fitting Colour	White
Mounting Type	Field mount
IP Rating	IP20

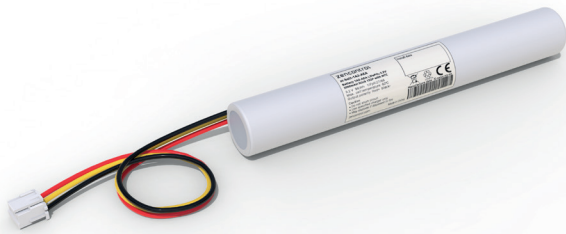
CONTROLLER OPERATIONAL INFORMATION

Voltage	220-240V~
Frequency	50/60Hz
Control system	DALI-2
DALI line current	2 mA
Ethernet	10 / 100 TCP / IP Ethernet
Ambient temp.	0 - 40°C
Max radio tx power	+8 dBm
Class	II
Wiring	1 - 4mm ² Strip 6 - 7 mm

RELEVANT STANDARDS

-	IEC 61347-2-11
-	IEC 60950-1
-	IEC 62386-103
-	IEC 62386-104
-	EN 55015
-	EN 55022

BATTERY

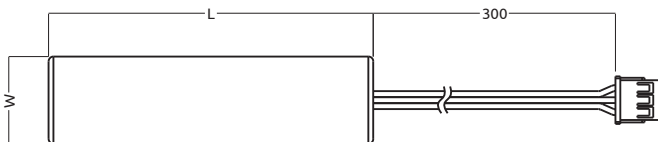


2026 H1 January to June

PRODUCT RANGE		
ORDER CODE	SKU	DESCRIPTION
zc-batt-1A2-AEA	53023	Battery 1A2-AEA LiFeP04 3.2V >3000mAH Stick 1S2P with NTC
zc-batt-1A3-AEA	53024	Battery 1A3-AEA LiFeP04 3.2V >4500mAH Stick 1S3P with NTC
zc-batt-1A4-AEA	53032	Battery 1A4-AEA LiFeP04 3.2V >6000mAH Stick 1S4P with NTC
zc-batt-1A5-AEA	53036	Battery 1A5-AEA LiFeP04 3.2V >7500mAH Stick 1S5P with NTC
zc-batt-1A6-AEA	53038	Battery 1A6-AEA LiFeP04 3.2V >9000mAH Stick 1S6P with NTC

FEATURES	
■	NTC Resistor 10k @25°C, 3950B.
■	3pole connector.

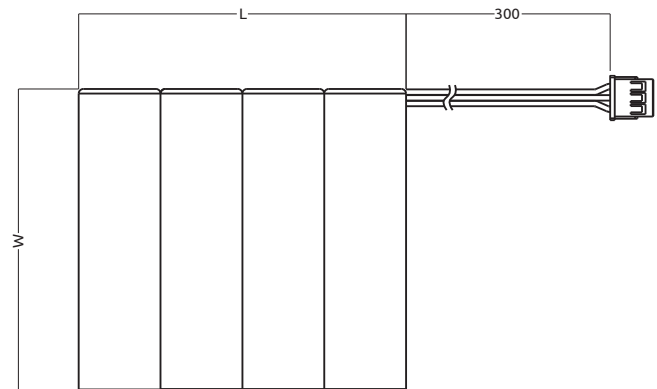
DIMENSIONS	
Mounting options	Push Terminal block
Dimensions	W 18.5 / L 132 mm(1A2-AEA)
	W 18.5 / L 197 mm(1A3-AEA)
	W 18.5 / L 262 mm(1A4-AEA)
	W 18.5 / L 327 mm(1A5-AEA)
	W 18.5 / L 392 mm(1A6-AEA)



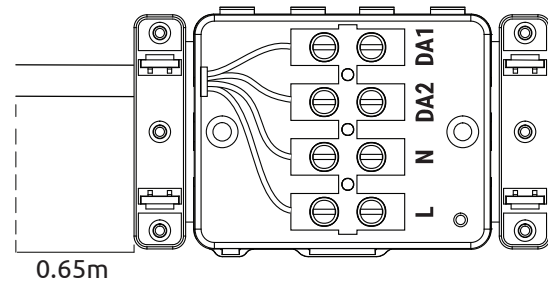
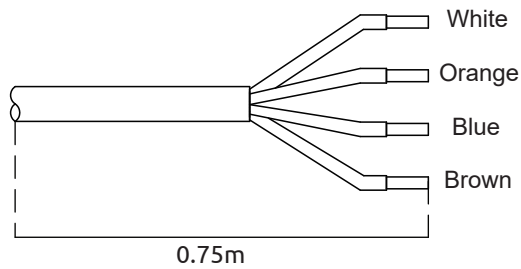
PRODUCT RANGE		
ORDER CODE	SKU	DESCRIPTION
zc-batt-1A2-AEB	53039	Battery 1A2-AEB LiFeP04 3.2V >3000mAH Stick 1S2P with NTC
zc-batt-1A3-AEB	53040	Battery 1A3-AEB LiFeP04 3.2V >4500mAH Stick 1S3P with NTC
zc-batt-1A4-AEB	53041	Battery 1A4-AEB LiFeP04 3.2V >6000mAH Stick 1S4P with NTC
zc-batt-1A5-AEB	53049	Battery 1A5-AEB LiFeP04 3.2V >7500mAH Stick 1S5P with NTC
zc-batt-1A6-AEB	53050	Battery 1A6-AEB LiFeP04 3.2V >9000mAH Stick 1S6P with NTC

FEATURES	
■	NTC Resistor 10k @25°C, 3950B.
■	3pole connector.

DIMENSIONS	
Mounting options	Push Terminal block
Dimensions	W 67 / L 37 mm(1A2-AEA)
	W 67 / L 55 mm(1A3-AEA)
	W 67 / L 73 mm(1A4-AEA)
	W 67 / L 91 mm(1A5-AEA)
	W 67 / L 109 mm(1A6-AEA)



ACCESSORIES



PRODUCT RANGE

ORDER CODE	DESCRIPTION
EK-LEDFIRE-*	LEDFIRE series will ship with 4 core cable as default
EK-SLIMFIRE-*	SLIMFIRE series will ship with 4 core cable as default
EK-RAZOR-*	RAZOR series will ship with 4 core cable as default, Excluding the SM-* Series.

FEATURES

- 4 Core Cable

- Low Smoke and Hologen Free

Live = Brown, Neutral = Blue, DALI + = Orange, DALI- = White

With Bootlaces

PRODUCT RANGE

ORDER CODE	DESCRIPTION
EK-LEDFIRE-*	LEDFIRE series can ship with a 4 core junction box - contact salesfor more information.
EK-SLIMFIRE-*	SLIMFIRE series can ship with a 4 core junction box - contact salesfor more information.
EK-RAZOR-*	RAZOR series can ship with a 4 core junction box - contact salesfor more information. Excluding the SM-* Series.

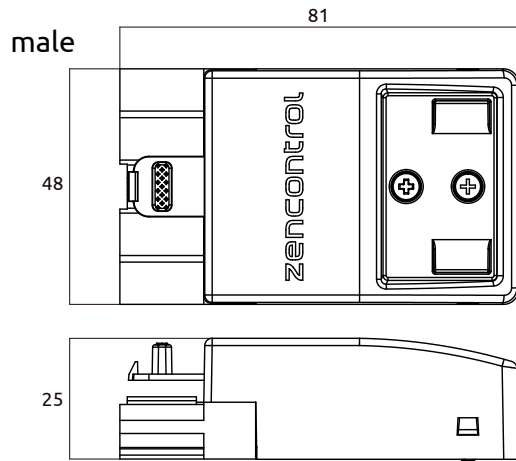
FEATURES

- 4 Pole 6mm² Terminal block

- Low Smoke and Halogen Free

Live = Brown, Neutral = Blue, DALI + = Orange, DALI- = White

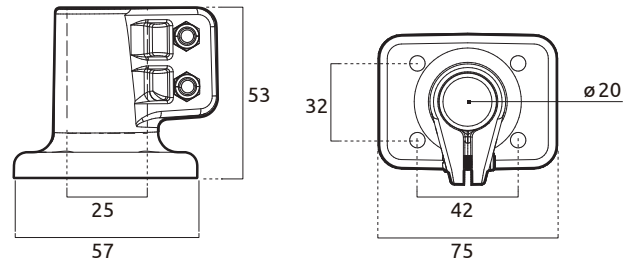
ACCESSORIES



PRODUCT RANGE		
ORDER CODE	SKU	DESCRIPTION
zc-plug-male-d5w	53112	DALI keyed male plugfor zc-driver-40

PRODUCT RANGE	
COMPATIBLE	DESCRIPTION
EK-LEDFIRE-*	LEDFIRE series can ship with zc-plug-male-d5w
EK-SLIMFIRE-*	SLIMFIRE series can ship with zc-plug-male-d5w
EK-RAZOR-*	RAZOR series can ship with zc-plug-male-d5w, Excluding the SM-* Series.

FEATURES
<ul style="list-style-type: none"> 5 Pole Wieland DALI compatible plug



PRODUCT RANGE		
ORDER CODE	SKU	DESCRIPTION
zc-rodmount-whi	53346	Rod mount kit,white,to be used with smart sensor surface mount kit
zc-rodmount-blk	53798	Rod mount kit,black,to be used with smart sensor surface mount kit

PRODUCT RANGE	
COMPATIBLE	DESCRIPTION
EK-MERCURY-*	MERCURY Series Rod mount kit,to be used with smart sensor surface mount kit
EK-LEDFIRE-*	LEDFIRE Series Rod mount kit,to be used with smart sensor surface mount kit
EK-QUADRO-*	QUADRO Series Rod mount kit,to be used with smart sensor surface mount kit
EK-ALECTIS-IP65-*	ALECTIS Series Rod mount kit,to be used with smart sensor surface mount kit

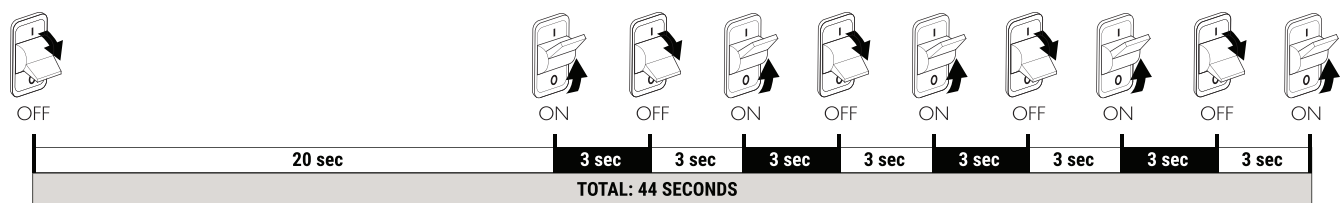
FEATURES
<ul style="list-style-type: none"> Allow for 20mm Conduit mounting from ceiling. Maximum of 8kg loading

Products with SafeTest functionality must be commissioned to SafeTest mode upon installation. Once activated, the Ektor SafeTest will automatically conduct 6-monthly periodical 180min emergency functionality testing, replacing the need for manual testing and monitoring. Once tests are conducted, results are easily readable via the LED status indicator on each unit.

ACTIVATING SafeTest

SafeTest mode can be activated by following the procedure below. This method is designed to switch all devices on the same circuit into SafeTest mode simultaneously.

- 1 Ensure power is connected to the unit and that the battery has at least 20% charge.
- 2 Switch the power OFF and ON five times (i.e. 5 power cycles). **Start with a 20-second OFF period**, then leave 3 seconds between each switch. A phone timer can assist with timing accuracy.



- 3 Once the power cycles are complete, the unit will automatically enter SafeTest mode. The LED indicator will flash **red** in a 3-short-flash pattern for 15 minutes before returning to standard operation (see Status LED chart below). To immediately begin a discharge test, perform only **3 power cycles** instead of 5.
- 4 To deactivate SafeTest mode, perform a **7-cycle** mains switching sequence (refer to the table overleaf).

Note: All units are programmed to conduct a 180-minute duration test every 6 months. This cycle features a random start time to prevent multiple units on the same circuit from testing simultaneously.

TEST SWITCH PRESSES

Test switches is located on each of the Emergency luminaires in different locations - but the functionality will remain the same for the product. A press is roughly 0.2 seconds on and 0.2 seconds off, or up to a max of 3 a second.

BASE LEVEL

Button Press	Function	LED Action	LED Action Visual	Notes
Hold <4sec	Start Function Test	See General Status Table		Does not alter the schedule for the six-month synchronised test
Hold <4sec	Emergency test mode			
Hold >10sec	If in Standby- Duration Test	See General Status Table		Does not alter the schedule for the six-month synchronised test
Hold >10sec	If in Duration Test- Exit Duration Test			
2 press(<2 sec)	Check Mode / Check last result	Latest Status = Selftest		Loops for 20 seconds allowing visual check of Status Self test will report device General Status Standalone will single flash Red
3press (<2 sec)	Clear Led Flash	Attempt to go to normal mode or Error		Changed because of feeling of the button presses. The device used to be confusing when a single press would start a test.
1 press (>4 sec)	Enter Settings Mode (Level 1)			5 second entrance / 5 second timeout

LEVEL 1

Button Press	Function	LED Action	LED Action Visual	Notes
1 press (>4 sec)	Enter Settings Mode Level 2 (Reserved for Future use) (See below settings mode press Level 2)			5 second entrance / 5 second timeout
3 press	Activate Self Test and start immediate duration test	3 x Red Flash (0.25s flashrate)		Loops for 20 seconds allowing visual check on unit
5 press	Activate Self Test (no Duration Test)	5 x Red Flash (0.25s flashrate)		Loops for 20 seconds allowing visual check on unit
7 press	Turn off self test	7 x Red Flash (0.25s flashrate)		Loops for 20 seconds allowing visual check on unit
9 press	Clear test result	9 x Red Flash (0.25s flashrate)		Loops for 20 seconds allowing visual check on unit
17 press	Toggle Maintained / Non-Maintained	7 x Red Flash (0.25s flashrate)		Loops for 20 seconds allowing visual check on unit

GENERAL LED STATUS

Function	LED action	LED action Visual	Notes
Emergency Mode / No Power	All OFF		
Battery Charging	Green on 4s off 1s		Topping up the battery does not trigger this LED state. Top up is where the battery is full and has drifted a little lower then requires the top up.
OK	Green		Everything is normal
Function Test	Green Flash (0.5s flashrate)		Function test is active
Duration Test	Red (2.5s flashrate)		Duration test is active
Duration Test Pass	Red on 4s Green on 1s		Device goes back to Normal mode.
Lamp Failure	Red and Green (0.5s flashrate)		Lamp has a short circuit / open circuit condition.
Battery Failure	Red (0.5s flashrate)		Battery has failed or is missing.
System Failure/ Timer Failure / Config Failure/ DT/FT Failure	Red (0.25s flashrate)		A failure of some kind.
No Duration Test Result (untested / test interrupted)	Slow Green Flash (1s flashrate)		No duration test record, recorded.
Duration Test Pending	1 x Green (0.25s flashrate)		Battery is not currently full and the test is awaiting to start.
Configuration Change (Pass)	2 x Green (0.25s flashrate)		Accepting a configuration change, this could include a new emergency power, or a battery type change or some other core config change in the field
DALI System Failure DALI	4 x Green (0.25s flashrate)		DALI voltage missing after obtaining a DALI short address
DALI missing Short Address	5 x Green (0.25s flashrate)		DALI voltage present and missing a DALI short address.



